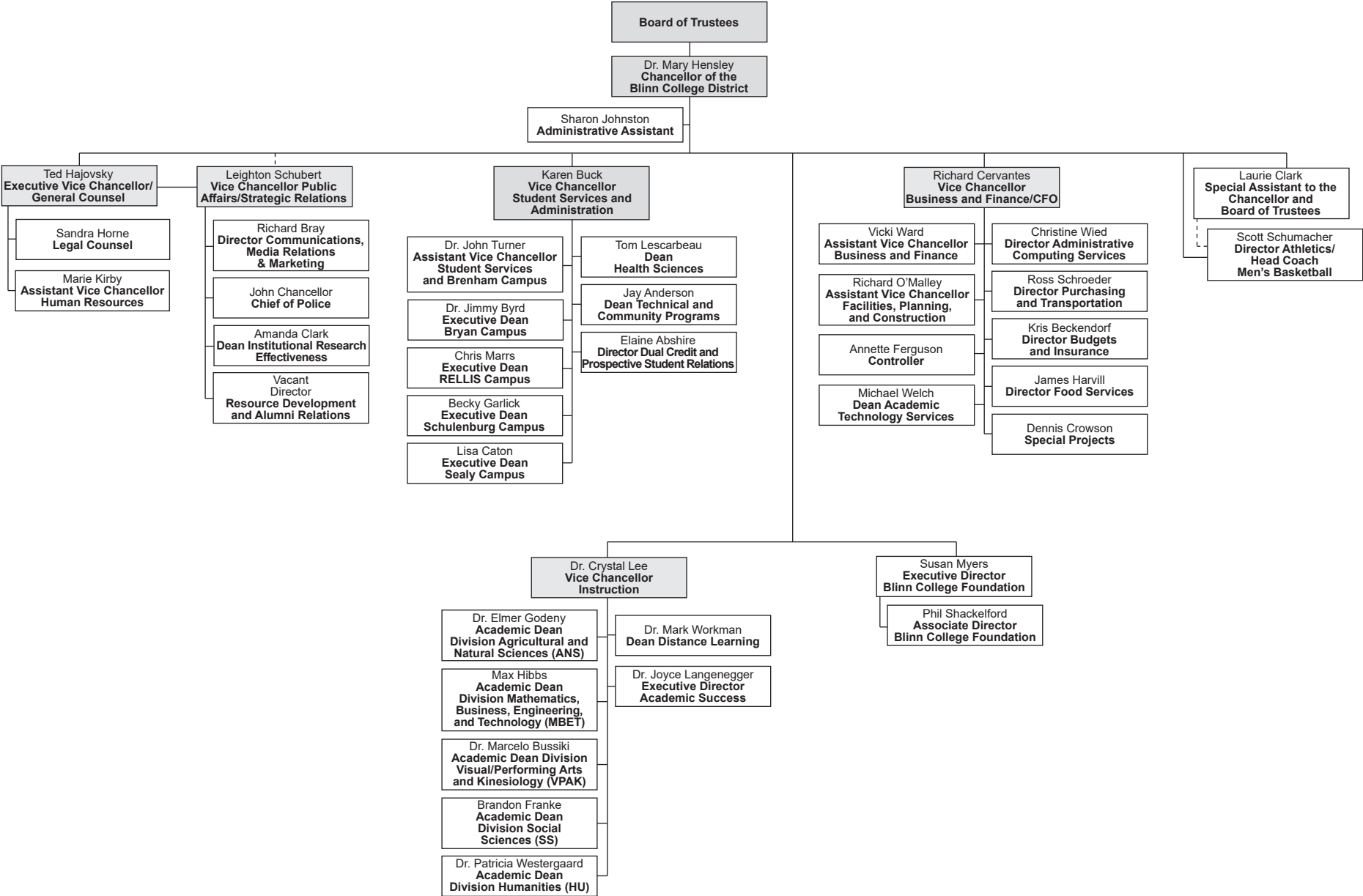
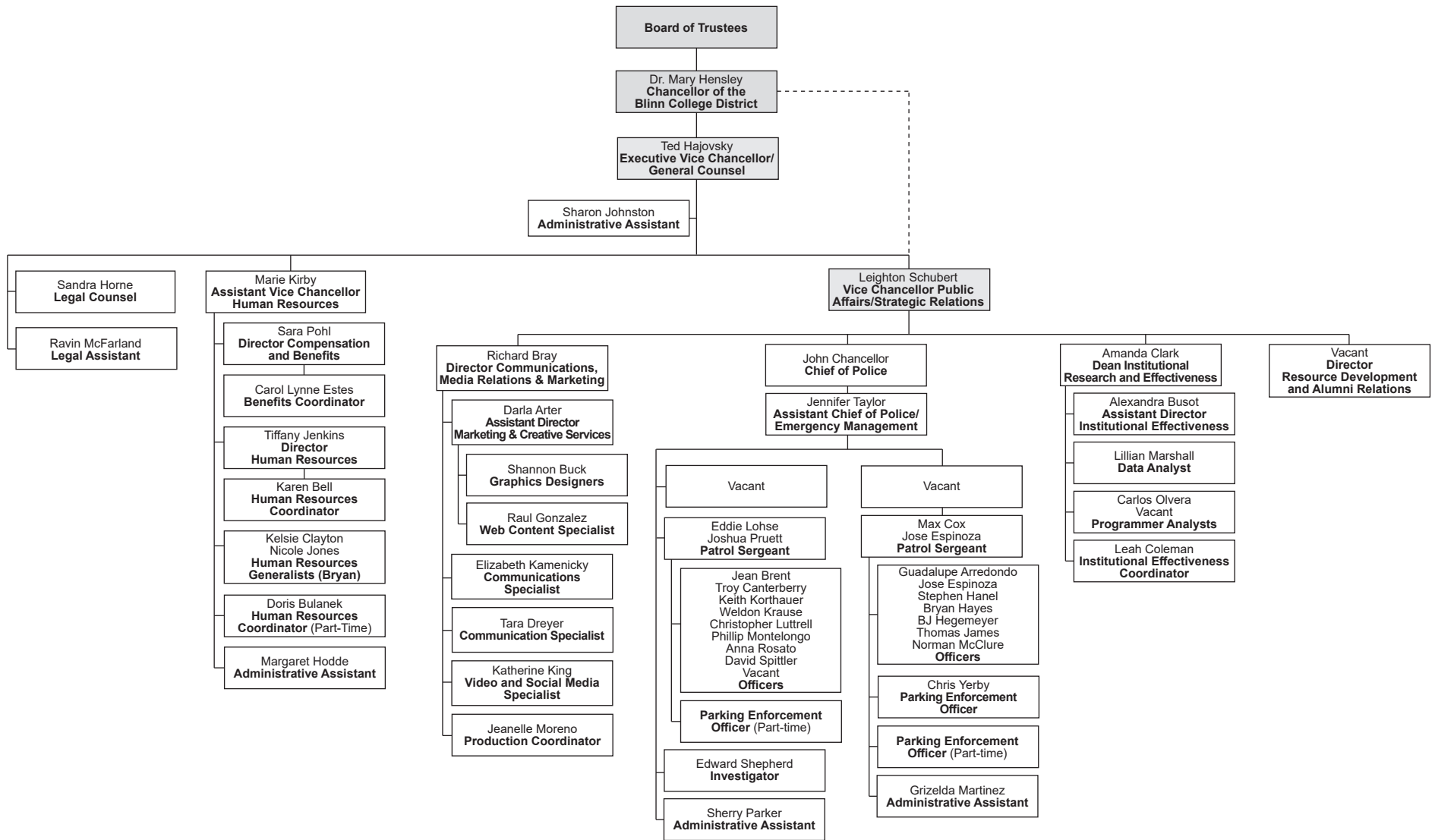


# BLINN COLLEGE ORGANIZATION BY PERSONNEL

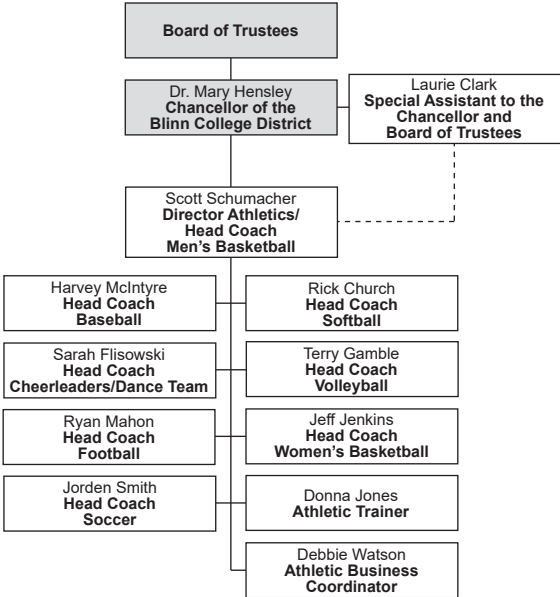


Only names of full-time personnel are listed.  
Revised July 16, 2018 with the Chancellor's Approval

# BLINN COLLEGE ORGANIZATION BY PERSONNEL

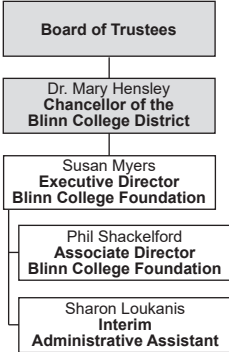


# BLINN COLLEGE ORGANIZATION BY PERSONNEL

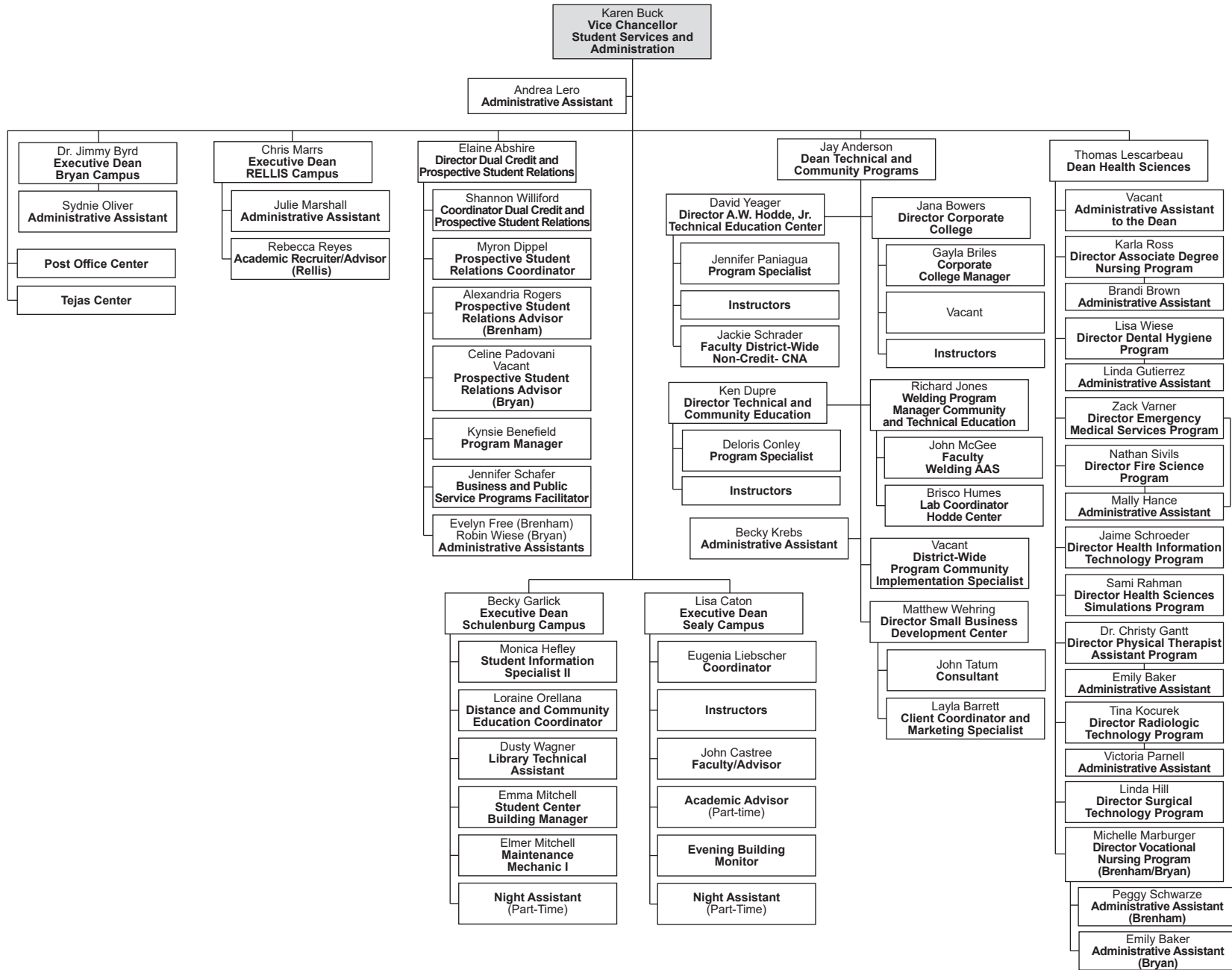


Only names of full-time personnel are listed.  
Revised June 11, 2018 with the Chancellor's Approval

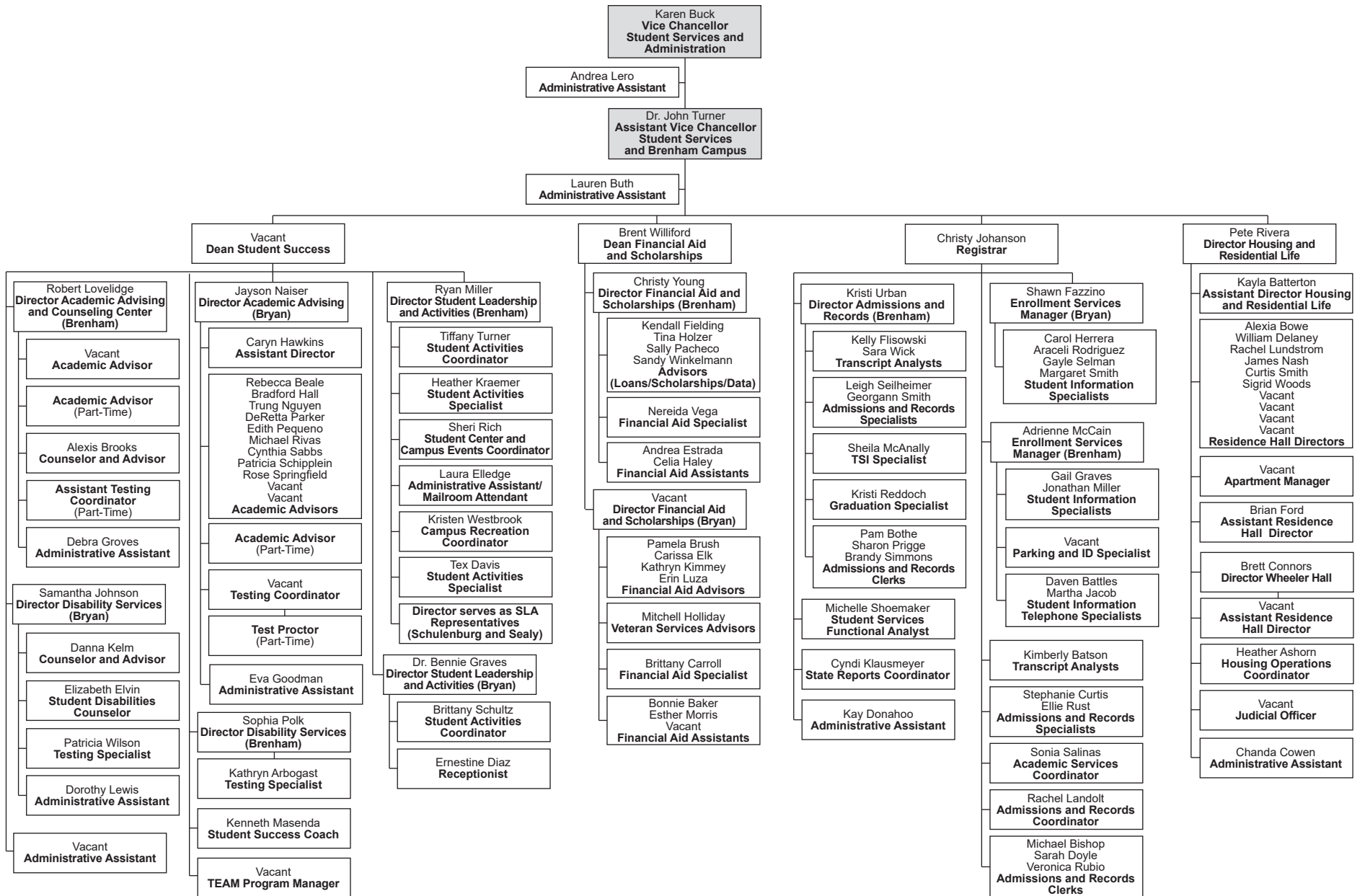
# BLINN COLLEGE ORGANIZATION BY PERSONNEL



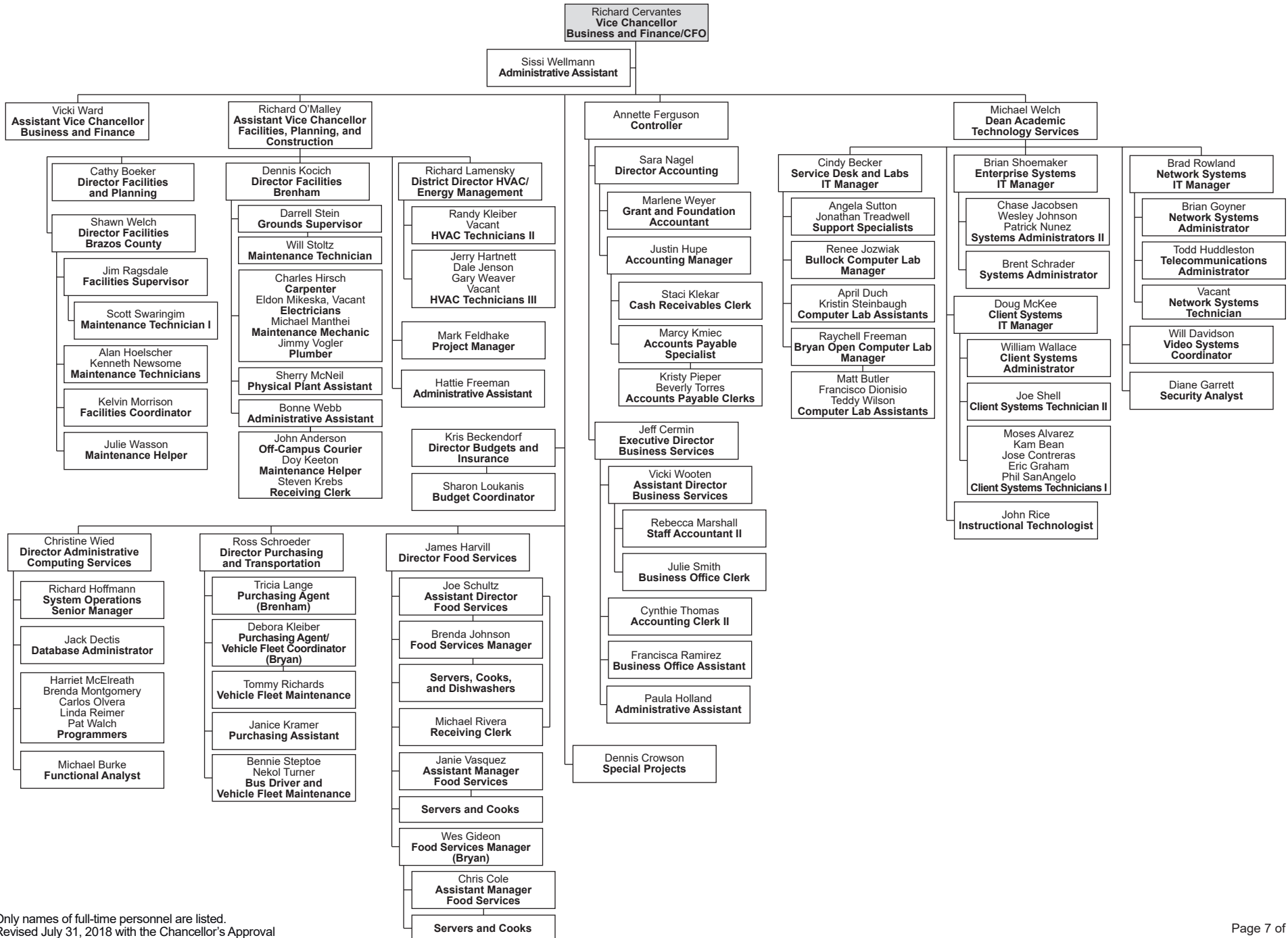
# BLINN COLLEGE ORGANIZATION BY PERSONNEL



# BLINN COLLEGE ORGANIZATION BY PERSONNEL

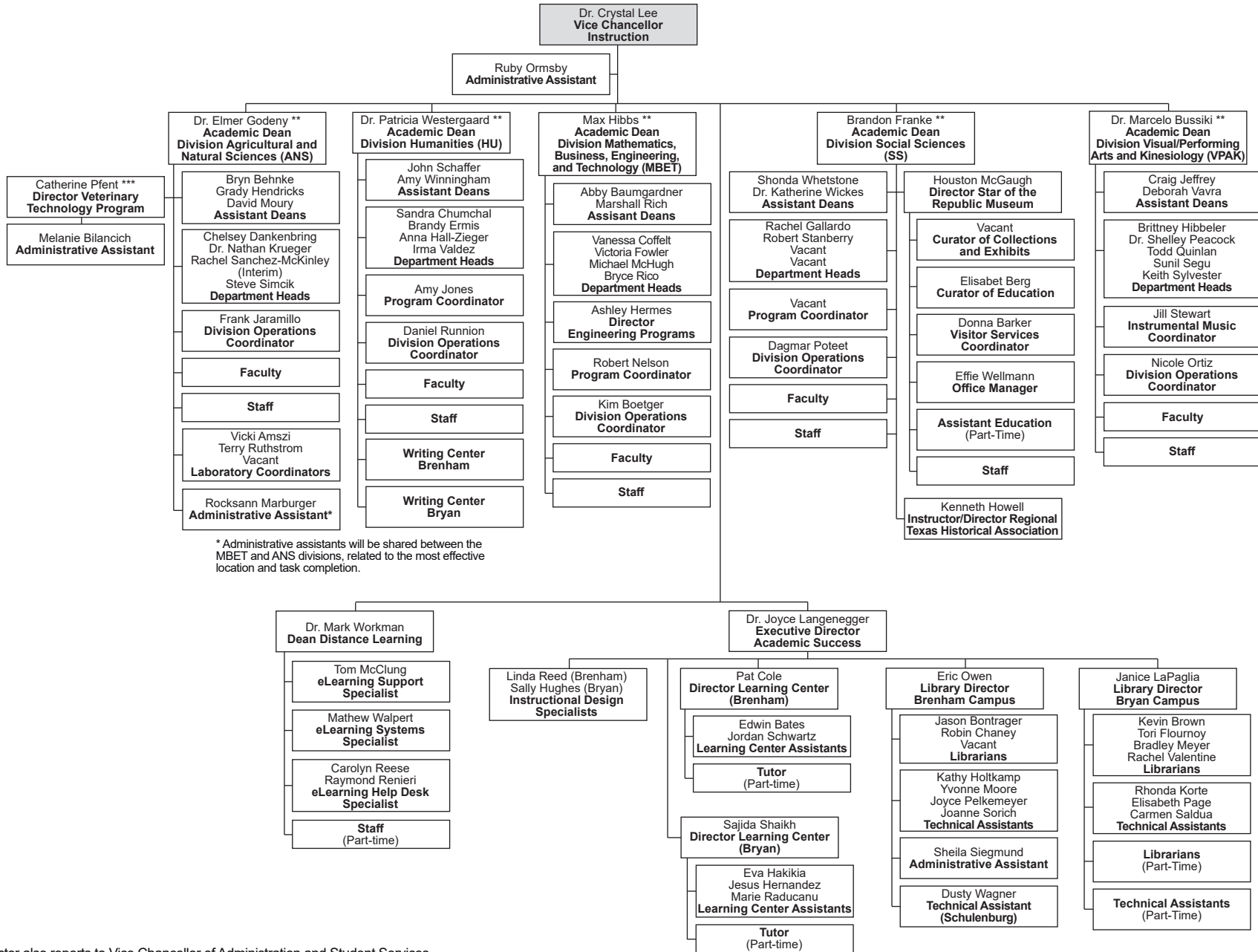


# BLINN COLLEGE ORGANIZATION BY PERSONNEL



Only names of full-time personnel are listed.  
Revised July 31, 2018 with the Chancellor's Approval

# BLINN COLLEGE ORGANIZATION BY PERSONNEL



\* Administrative assistants will be shared between the MBET and ANS divisions, related to the most effective location and task completion.

\*\*\*Note: Director also reports to Vice Chancellor of Administration and Student Services

Only names of full-time personnel are listed.  
 \*\*Note: Deans also report to Vice Chancellor of Administration and Student Services related to applied science programs and Perkins activities.  
 Revised August 7, 2018 with the Chancellor's Approval