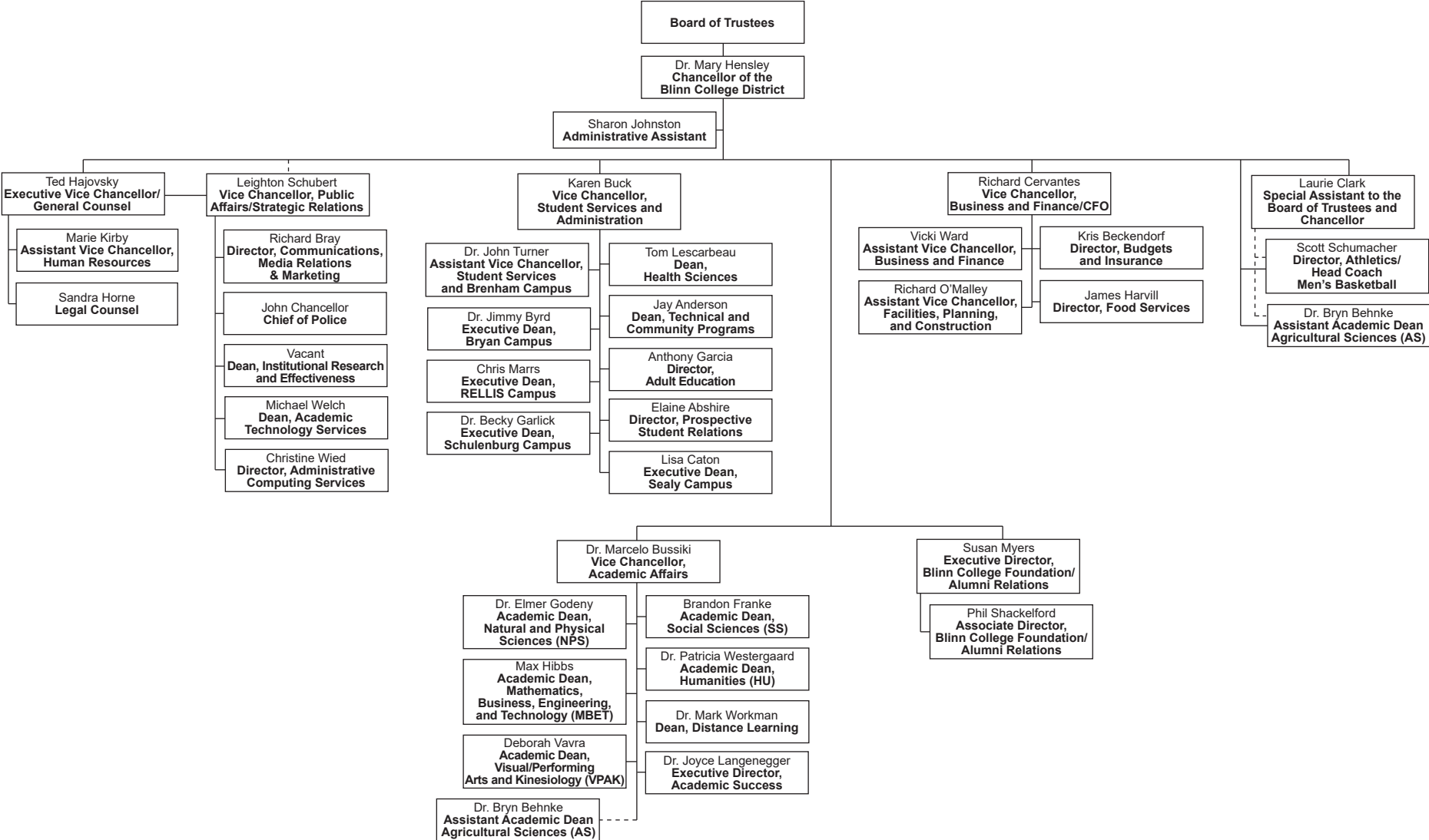
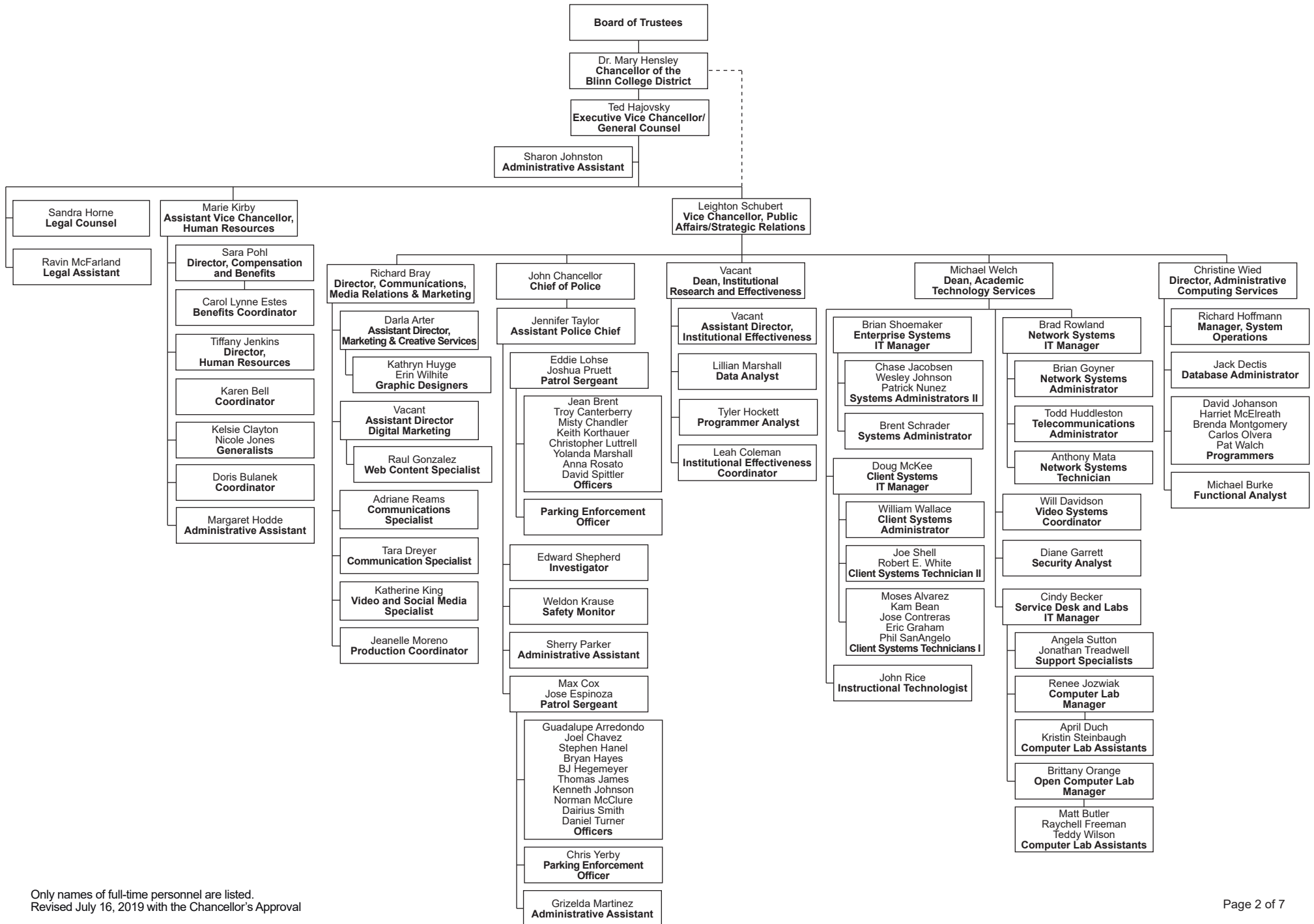


BLINN COLLEGE ORGANIZATION BY PERSONNEL



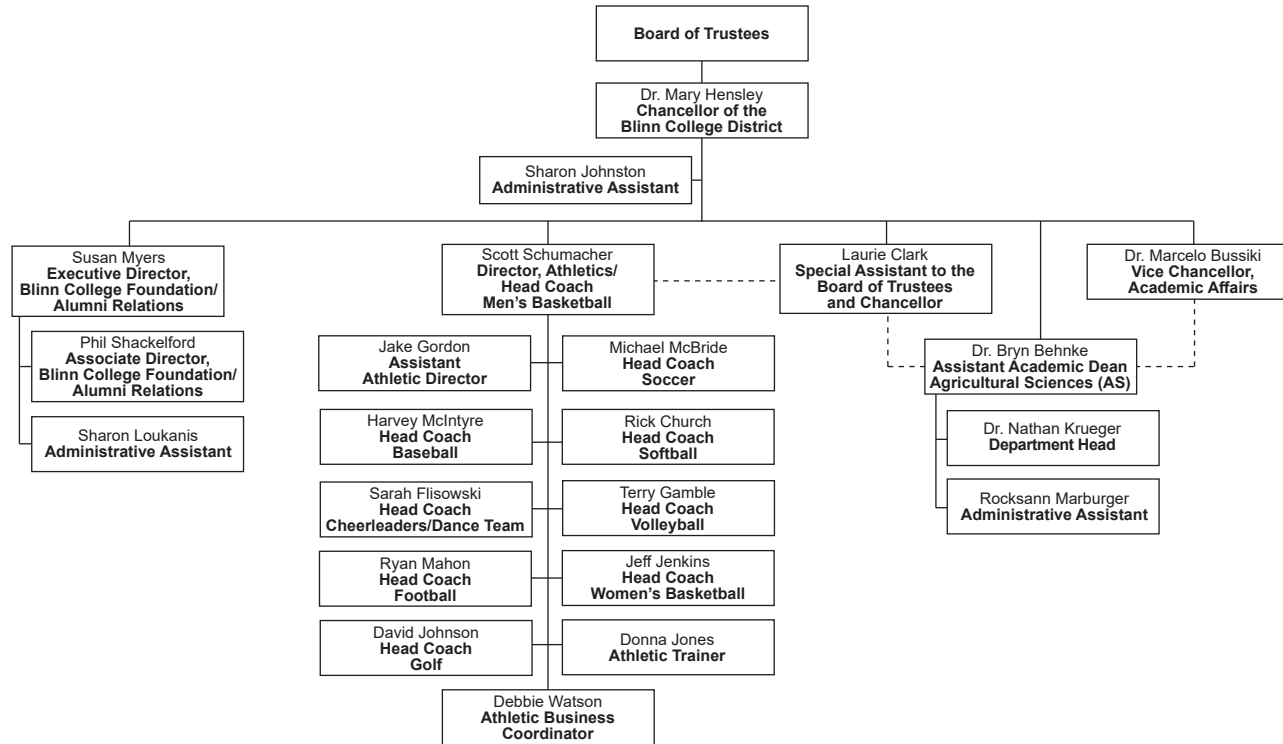
Only names of full-time personnel are listed.
Revised July 24, 2019 with the Chancellor's Approval

BLINN COLLEGE ORGANIZATION BY PERSONNEL

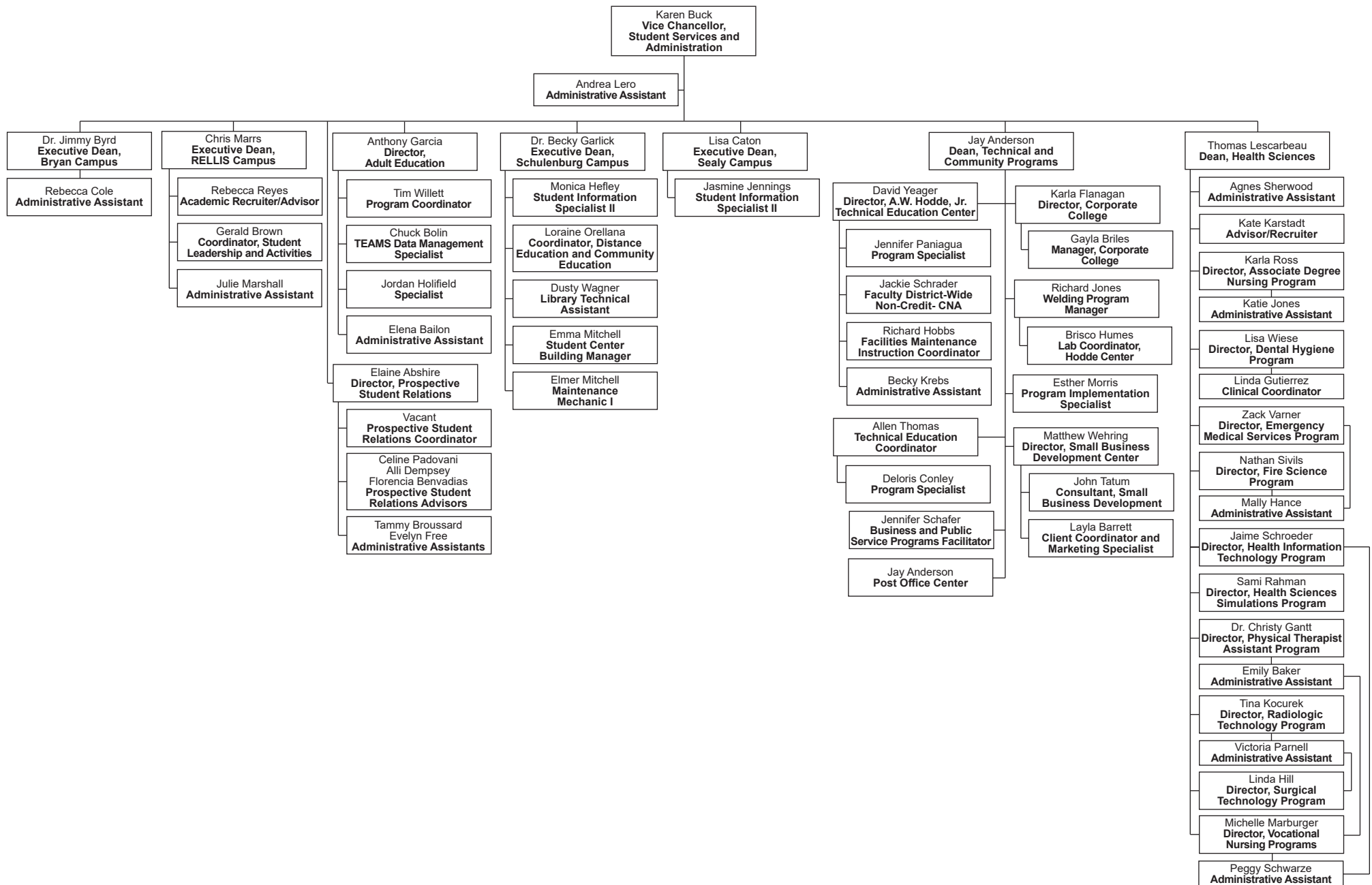


Only names of full-time personnel are listed.
Revised July 16, 2019 with the Chancellor's Approval

BLINN COLLEGE ORGANIZATION BY PERSONNEL

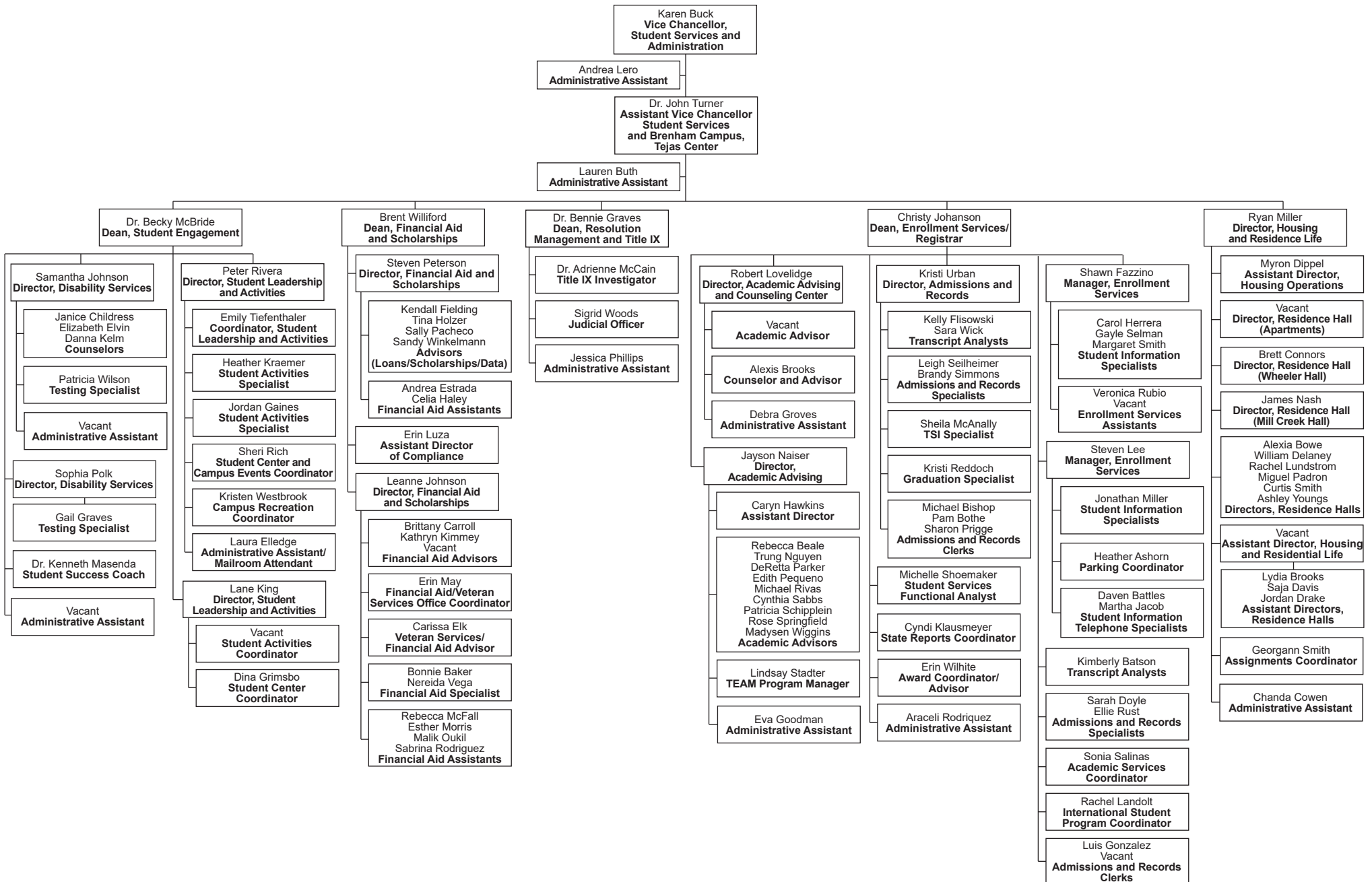


BLINN COLLEGE ORGANIZATION BY PERSONNEL

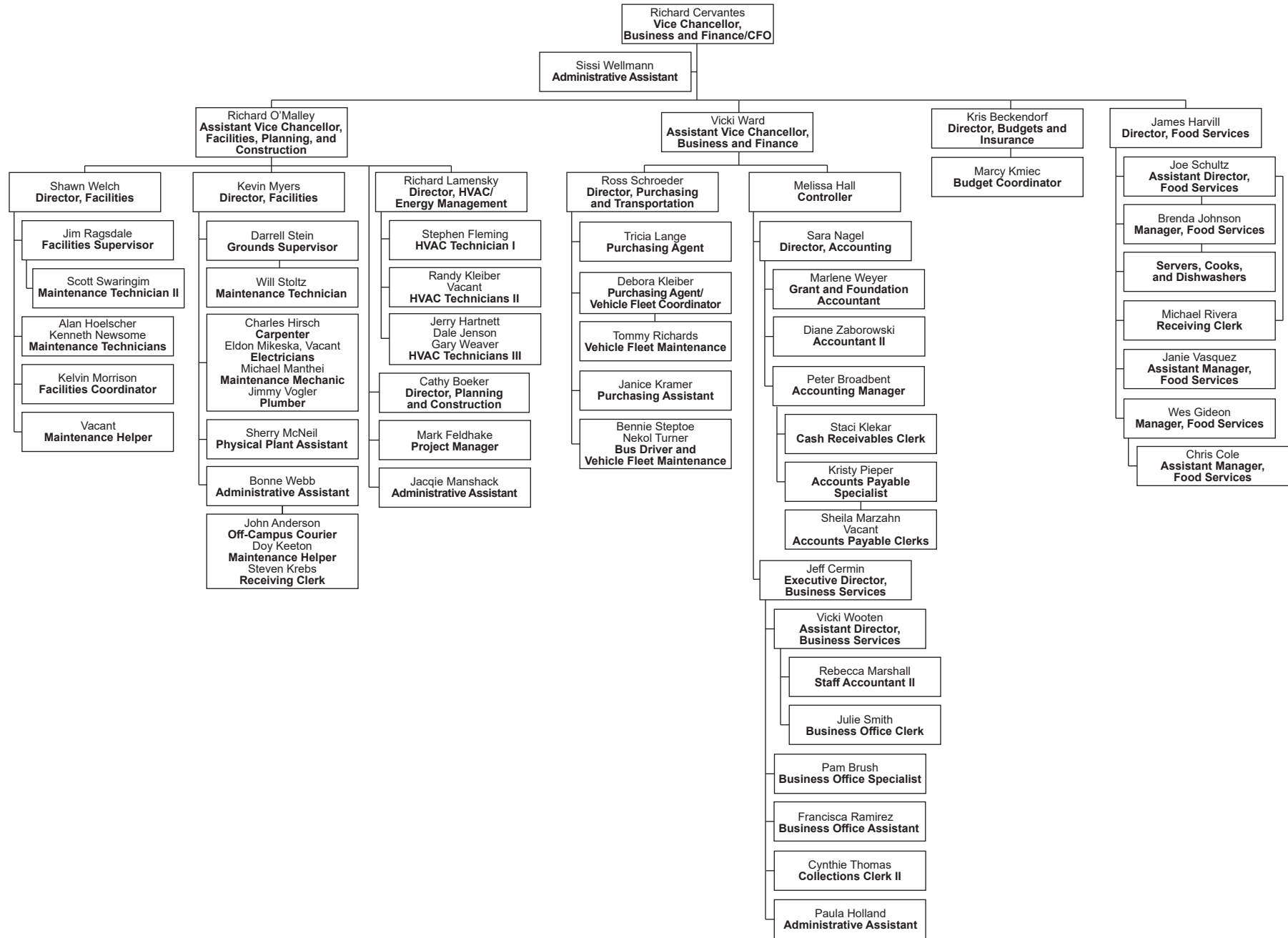


Only names of full-time personnel are listed.
Revised July 24, 2019 with the Chancellor's Approval

BLINN COLLEGE ORGANIZATION BY PERSONNEL



BLINN COLLEGE ORGANIZATION BY PERSONNEL



BLINN COLLEGE ORGANIZATION BY PERSONNEL

