



# Blinn College District Monthly Financial Report



For period ended May 31, 2023

Blinn College District  
Table of Contents

	Page
<i>EXECUTIVE SUMMARY</i> .....	1
<i>FINANCIAL SECTION</i> .....	3
Operating Statements	
Statement of Budgeted Revenues and Expenditures.....	4
Statement of Operating Revenues.....	5
Statement of Expenditures by Function.....	6
Statement of Expenditures by Category.....	7
Statement of Net Position.....	8
Statement of Net Position Supplementary Information.....	9
Investment Report by Fund.....	10
<i>SUPPLEMENTARY SCHEDULES AND GRAPHS</i> .....	11
Schedules	
Certificate of Deposit Investment Detail.....	12
Analysis of Replacements and Renovations and Capital Projects.....	13
Blinn College Foundation Scholarships and Endowments.....	14
Blinn College District Check Register Issued Over \$10,000.....	18
Graphs	
Operating Revenue.....	19
Operating Expenditures.....	20
Actual Expense by Category.....	21
Cash and Investments.....	22

**Blinn College District  
Executive Summary  
As of May 31, 2023**

**General**

**Tuition & Fees**

Deferred tuition, fees, auxiliary fees, food service, housing, and parking revenue are recognized prorata over the term based on the number of months within the term.

**State Appropriations**

The FY 2023 State appropriations for formula funding and group insurance are recognized one-twelfth each month over the fiscal year, as revenues in the accompanying financial statements. Cash payments from the state are only received in 10 of the months each year, with no payments being received in January or February. State appropriations specific to employee benefits are recognized each month as the cost is incurred.

**Waivers & Exemptions**

At 05/31/2023, Waivers & Exemptions issued to students for FY 2023 totaled \$3.8 million versus \$3.2 million for FY 2022. The Hazelwood exemption comprises 34% of the total Waivers & Exemptions, followed by the Bryan Early Collegiate High School at 22%, Child Protective Services waiver at 14%, Technical Concurrent & Concurrent Enrolled at 7%, Dependent when Vet is Disabled at 10% and Other at 13%.

**Net Increase (Decrease) in Educational and Auxiliary Funds**

The current year increase in Educational and Auxiliary funds of \$12.4 million is \$11.5 million less than the prior year increase of \$23.9 million.

**Unrestricted Cash Position & Transactions**

Unrestricted Cash and Cash Equivalents were \$118.6 million and \$125.9 million at 05/31/2023 and 05/31/2022, respectively.

**Statement of Operating Revenues**

**Tuition and Fees**

Current year net tuition and fees of \$63.1 million is \$3.6 million higher than prior year of \$59.5 million, representing an increase of 6%. The increase is primarily due to increases in Out-of-District tuition of \$1.7 million; Non-Resident tuition of \$914 thousand; General Use Fee of \$1.4 million; Lab and Course Fees of \$359 thousand; Workforce fees of \$296 thousand; increases in Waivers and Exemptions of (\$645 thousand); and increases in Allowances and Discounts of (\$480 thousand).

**Auxiliary Enterprises**

Current year Auxiliary Enterprises of \$10.1 million is \$933 thousand higher than prior year of \$9.1 million, representing an increase of 10%. The increase is primarily due to an increase in Food Service of \$803 thousand; increase in Bookstore of \$70 thousand; and, an increase in parking of \$94 thousand.

**Interest Revenue**

Current year Interest Revenue of \$2.5 million is \$2.1 million higher than prior year of \$490 thousand, representing an increase of 420%. The increase is due to rising interest rates on investments.

**Miscellaneous Revenue**

Miscellaneous Revenue is \$1.2 million and \$16.0 million at 05/31/2023 and 05/31/2022, respectively, representing a decrease of \$14.8 million. This change is due to a decrease of \$15.0 million in HEERF revenue. All HEERF funds were expended during FY 2022.

**Statement of Expenditures by Function**

**Operation and Maintenance of Plant**

Operation and Maintenance of Plant expenditures were \$9.1 million and \$8.2 million at 05/31/2023 and 05/31/2022, respectively, representing an increase of \$899 thousand, or 11%. This expense is primarily due to increases in Plant Support of \$252 thousand; Building Maintenance of \$322 thousand; and Campus Security of \$342 thousand.

**Athletics**

Athletics expenditures were \$2.6 million and \$2.2 million at 05/31/2023 and 05/31/2022, respectively, representing an increase of \$436 thousand, or 20%. This increase is primarily due to net increases in salaries and benefits of \$416 thousand and increases in student travel of \$38 thousand.

**Statement of Expenditures by Category**

**Salaries and Wages**

Staff salaries increased by \$2.3 million, or 13%. This increase is due to the hiring of vacant staff positions and the 5% salary increases effective 9/1/2022.

**Travel**

Travel increased by \$378 thousand, or 40%. This increase is due to cancellation of travel restrictions related to COVID during FY 2022.

**Consumables**

Consumables decreased by \$563 thousand, or 15%. This decrease is due to the decrease in purchases of minor furniture and equipment.

**Utilities and Telephone**

Utilities and telephone increased by \$246 thousand, or 11%. This increase is due to increases in utility rates during FY 2023.

**Furniture, Equipment and Property**

Furniture, equipment and property increased by \$427 thousand, or 235% due to the purchase of budgeted computer equipment and vehicles.

## Statement of Net Position

### Assets

#### Cash in Investment Pools

Cash in Investment Pools decreased \$25.8 million as compared to the prior year. The decrease in Cash is directly related to the purchase of \$15.3 million in certificates of deposit and \$7.8 million in US Treasury Notes along with a decrease in HEERF revenue reimbursement as compared to the prior year.

#### Scholarship Fund Investments

Scholarship Fund Investments increased \$642 thousand as compared to the prior year which is reflective of the increase in College Scholarship funds.

#### Auxiliary Project Reserve Fund Investments

Auxiliary Project Reserve Fund Investments decreased \$672 thousand as compared to the prior year. This decrease is due to the expenditure of funds for Mill Creek upgrades to accommodate eSports.

#### Construction Funds

Construction and Restricted Fund Investments decreased \$1.8 million. This decrease is due to the 2020 bond proceeds being fully expended on construction of the Brenham STEI building during FY 2022.

#### Certificate of Deposit and US Treasury

Certificate of Deposit and Treasury increased by \$18.5 million. The College purchased additional CDs: \$10 million through Multi-Bank Securities and \$5 million through Bank of Brenham and \$7.8 million of US Treasury Note.

#### Other Assets

Other assets increased \$756 thousand as compared to the prior year. This increase is due to the timing of recording prepaid expenses. Prepaid expenses are now being recorded monthly rather than annually as was done in prior years.

#### Capital Assets

Net Capital Assets are valued at \$229.5 million, an increase of \$29.5 million from prior year. The increase is directly related to the Brenham Science, Technology, Engineering, and Innovation Building, completion of the RELIS Administration Building, and the implementation of GASB 87 requiring certain leases reported as capital assets.

#### Deferred Outflows

Deferred outflows decreased by \$5.9 million due to adjustments in GASB 68 and GASB 75 related to pensions.

### Liabilities

#### Accounts Payable

Accounts Payable decreased \$1.3 million from prior year.

#### Agency Funds

Agency funds increased \$224 thousand from prior year. This is due to more activity within the student groups as compared to the prior year. COVID restrictions were still in place for most of FY 2022.

#### Lease Liability

Lease Liability increased \$10.6 million from prior year. Reporting lease liability is a requirement of GASB 87 which was implemented at the end of FY 2022.

#### Net Pension Liability

Net Pension Liability Related to Pensions (GASB 68) decreased \$11.8 million as compared to the prior year.

#### Deferred Inflows

Deferred Inflows increased by \$3.4 million due to adjustments in GASB 68 and GASB 75 related to pensions.

### Net Assets

#### Leases

Leases increased \$13.1 million from prior year. Reporting lease assets is a requirement of GASB 87 which was implemented at the end of FY 2022.

#### Student Aid

Student Aid decreased \$608 thousand from the prior year.

#### Net Assets

Unrestricted net assets increased by \$1.8 million from prior year.

## FINANCIAL SECTION

**BLINN COLLEGE DISTRICT**  
**Statement of Budgeted Revenues and Expenditures**  
**Month Ended May 31, 2023 and 2022**  
**(75% Of Fiscal Year)**

	Current Fiscal Year 2023			Prior FY Actual 05/31/22	Monthly Variance FY23 vs FY22	
	Budget	Actual	% Actual		Dollars	Percent
		05/31/23	To Budget			
<b>Operating Revenue</b>						
State Appropriations	\$ 25,353,968	\$ 19,015,477	75%	\$ 19,015,477	\$ -	0%
State Insurance and Retirement	5,931,902	4,638,593	78%	4,494,360	144,233	3%
Tuition & Fees (Net of Allowances)	73,473,183	63,066,264	86%	59,488,498	3,577,766	6%
Auxiliary Sales (Net of Allowances)	12,909,576	10,061,505	78%	9,128,446	933,059	10%
Property Taxes	2,278,968	2,287,912	100%	2,288,421	(509)	0%
Interest	500,000	2,549,386	510%	490,110	2,059,276	420%
HEERF Funding	-	-	-	15,011,420	(15,011,420)	-100%
Miscellaneous Revenue	852,241	1,206,890	142%	951,098	255,792	27%
<b>Total Operating Revenue</b>	<b>121,299,838</b>	<b>102,826,027</b>	<b>85%</b>	<b>110,867,830</b>	<b>(8,041,803)</b>	<b>-7%</b>
<b>Operating Expenditures</b>						
General Academic & Vocational Instruction	44,923,704	37,462,440	83%	35,384,171	2,078,269	6%
Public Service	265,000	98,433	37%	97,347	1,086	1%
Star of Republic Museum	-	-	-	3,896	(3,896)	-100%
Academic Support	10,655,012	6,899,261	65%	7,078,576	(179,315)	-3%
Library Services	1,892,817	1,362,152	72%	1,338,581	23,571	2%
Student Services	8,522,804	5,178,187	61%	5,180,058	(1,871)	0%
Institutional Support	19,999,747	12,495,393	62%	11,508,060	987,333	9%
Operation and Maintenance of Plant	13,858,122	9,144,987	66%	8,245,750	899,237	11%
Auxiliary Enterprises	12,439,513	9,032,276	73%	8,183,043	849,233	10%
<b>Total Operating Expenditures</b>	<b>112,556,719</b>	<b>81,673,129</b>	<b>73%</b>	<b>77,019,482</b>	<b>4,653,647</b>	<b>6%</b>
<b>Non-Operating Expenditures</b>						
Replacement and Renovations	-	-	-	1,080,216	(1,080,216)	-100%
Capital Projects - Budgeted	-	-	-	140,204	(140,204)	-
Contingency	-	-	-	-	-	-
Debt Service	8,743,119	8,743,119	100%	8,745,994	(2,875)	0%
<b>Total Non-Operating Expenditures</b>	<b>8,743,119</b>	<b>8,743,119</b>	<b>100%</b>	<b>9,966,414</b>	<b>(1,223,295)</b>	<b>-12%</b>
<b>Total Expenditures</b>	<b>121,299,838</b>	<b>90,416,248</b>	<b>75%</b>	<b>86,985,896</b>	<b>3,430,352</b>	<b>4%</b>
<b>Net Increase (Decrease) in Educational and Auxiliary Funds</b>	<b>\$ -</b>	<b>\$ 12,409,779</b>	<b>100%</b>	<b>\$ 23,881,934</b>	<b>\$ (11,472,155)</b>	<b>-48%</b>
<b>Non-Budgeted Capital Projects</b>						
Capital Projects - Bond Funds						
2019 Bond Project - STEI Building		\$ -		\$ 1,722,831		
2020 Bond Project - RELDIS II		-		9,255,900		
		<u>\$ -</u>		<u>\$ 10,978,731</u>		
Capital Projects - Capital Reserves						
Brenham Campus Projects		\$ 1,941,817		\$ 3,868,802		
Bryan Campus Projects		609,171		334,626		
RELDIS Campus Projects		1,457,440		5,835,346		
		<u>\$ 4,008,428</u>		<u>\$ 10,038,774</u>		
Property Purchases						
Brenham Campus Property Purchase		\$ 799,984		\$ 23,000		
Bryan Campus Property Purchase		-		-		
		<u>\$ 799,984</u>		<u>\$ 23,000</u>		
R&R - Capital Reserves		<u>\$ 3,280,242</u>		<u>\$ -</u>		
<b>2021 Ice Storm</b>						
Insurance Proceeds		\$ 6,746,826		\$ 6,083,955		
Disaster Repairs						
Brenham Campus		6,068,381		5,481,734		
Bryan Campus		395,741		364,669		
RELDIS Campus		4,883		4,883		
Schulenburg Campus		428		428		
Insurance Less Expenditures		<u>\$ 277,393</u>		<u>\$ 232,241</u>		
<b>2021 Hail Storm</b>						
Insurance Proceeds		\$ 129,451		\$ 129,451		
Disaster Repairs						
Bryan Campus		83,527		83,527		
Insurance Less Expenditures		<u>\$ 45,924</u>		<u>\$ 45,924</u>		
<b>2022 Winter Storm</b>						
Insurance Proceeds		\$ 375,820				
Disaster Repairs						
Brenham Campus		218,215				
Insurance Less Expenditures		<u>\$ 157,605</u>				

**BLINN COLLEGE DISTRICT**  
**Statement of Operating Revenues**  
**Month Ended May 31, 2023 and 2022**  
**(75% Of Fiscal Year)**

	Current Fiscal Year 2023			Prior FY Actual 05/31/22	Monthly Variance FY23 vs FY22	
	Budget	Actual 05/31/23	% Actual To Budget		Dollars	Percent
<b>Revenues</b>						
State Appropriations						
Contact Hour Funding	\$ 19,225,425	\$ 14,419,069	75%	\$ 14,419,069	\$ -	0%
Student Success	5,448,137	4,086,103	75%	4,086,103	-	0%
Core Operations	680,406	510,305	75%	510,305	-	0%
Total Appropriations	25,353,968	19,015,477	75%	19,015,477	-	0%
State Group Insurance	4,183,097	3,137,323	75%	3,137,319	4	0%
State Retirement						
Teachers Retirement System (TRS)	1,406,600	1,235,115	88%	1,099,687	135,428	12%
Optional Retirement Program (ORP)	342,205	266,155	78%	257,354	8,801	3%
Total State Group Insurance and Retirement	5,931,902	4,638,593	78%	4,494,360	144,233	3%
Total State Funding	31,285,870	23,654,070	76%	23,509,837	144,233	1%
Tuition						
In-District	439,217	347,061	79%	358,327	(11,266)	-3%
Out-of-District	43,656,422	37,770,783	87%	36,082,524	1,688,259	5%
Non-Resident	2,204,422	3,284,087	149%	2,369,764	914,323	39%
Non-Funded	66,000	89,550	136%	87,300	2,250	3%
Waivers and Exemptions	(3,700,000)	(3,796,988)	103%	(3,152,217)	(644,771)	20%
Allowances and Discounts	(3,021,360)	(2,990,285)	99%	(2,510,672)	(479,613)	19%
Bad Debts	(30,000)	(7,987)	27%	(14,036)	6,049	-43%
Total Net Tuition	39,614,701	34,696,221	88%	33,220,990	1,475,231	4%
Fees						
General Use Fee	28,422,150	23,917,528	84%	22,469,450	1,448,078	6%
Lab and Course Fees	4,536,332	3,356,516	74%	2,997,634	358,882	12%
Workforce Fees	900,000	1,095,999	122%	800,424	295,575	37%
Total Net Fees	33,858,482	28,370,043	84%	26,267,508	2,102,535	8%
Total Net Tuition and Fees	73,473,183	63,066,264	86%	59,488,498	3,577,766	6%
Auxiliary Enterprises						
Housing	4,930,871	3,827,548	78%	3,876,751	(49,203)	-1%
Food Service	5,832,895	4,496,475	77%	3,692,983	803,492	22%
Bookstore	925,000	639,322	69%	569,227	70,095	12%
Parking	1,900,000	1,804,844	95%	1,711,084	93,760	5%
Other Sources	650,000	302,250	47%	282,400	19,850	7%
Auxiliary Allowances and Discounts	(1,329,190)	(1,008,934)	76%	(1,003,999)	(4,935)	0%
Total Auxiliary Enterprises	12,909,576	10,061,505	78%	9,128,446	933,059	10%
Property Taxes	2,278,968	2,287,912	100%	2,288,421	(509)	0%
Interest - Operating	500,000	2,549,386	510%	490,110	2,059,276	420%
Miscellaneous Revenue						
Educational Sales and Services	415,160	953,224	230%	797,873	155,351	19%
Foundation		84,115	100%	52,889	31,226	59%
HEERF				15,011,420	(15,011,420)	-100%
Workstudy Reimbursement	437,081	169,551	39%	100,336	69,215	69%
Total Miscellaneous Revenue	852,241	1,206,890	142%	15,962,518	(14,755,628)	-92%
<b>Total Operating Revenue</b>	<b>\$ 121,299,838</b>	<b>\$ 102,826,027</b>	<b>85%</b>	<b>\$ 110,867,830</b>	<b>\$ (8,041,803)</b>	<b>-7%</b>

**BLINN COLLEGE DISTRICT**  
**Statement of Expenditures By Function**  
**Month Ended May 31, 2023 and 2022**  
**(75% Of Fiscal Year)**

	Current Fiscal Year 2023			Prior FY	Monthly Variance FY23 vs FY22	
	Budget	Actual	% Actual	Actual	Dollars	Percent
		05/31/23	To Budget	05/31/22		
<b>Operating Expenditures</b>						
General Academic & Vocational Instruction	\$ 44,923,704	\$ 37,462,440	83%	\$ 35,384,171	\$ 2,078,269	6%
Public Service	265,000	98,433	37%	97,347	1,086	1%
Star of Republic Museum				3,896	(3,896)	-100%
Academic Support	10,655,012	6,899,261	65%	7,078,576	(179,315)	-3%
Library Services	1,892,817	1,362,152	72%	1,338,581	23,571	2%
Student Services	8,522,804	5,178,187	61%	5,180,058	(1,871)	0%
Institutional Support	19,999,747	12,495,393	62%	11,508,060	987,333	9%
Operation and Maintenance of Plant						
Plant Support	4,147,827	2,723,915	66%	2,472,364	251,551	10%
Building Maintenance	3,888,235	2,535,976	65%	2,213,680	322,296	15%
Custodial Services	1,537,270	905,015	59%	964,276	(59,261)	-6%
Grounds Maintenance	640,901	410,574	64%	367,724	42,850	12%
Campus Security	3,643,889	2,569,507	71%	2,227,706	341,801	15%
Total Operating and Maintenance of Plant	13,858,122	9,144,987	66%	8,245,750	899,237	11%
Auxiliary Enterprises						
Housing	2,619,930	1,952,272	75%	1,849,161	103,111	6%
Food Services	4,280,069	2,970,083	69%	2,883,819	86,264	3%
Bookstore	3,000	108	0%	-		0%
Parking	37,000	7,598	21%	6,675	923	14%
Athletics	3,279,330	2,615,685	80%	2,179,844	435,841	20%
Student Center	1,162,750	744,250	64%	663,864	80,386	12%
Student Activities	574,198	446,973	78%	332,241	114,732	35%
Miscellaneous Auxiliary	483,236	295,307	61%	267,439	27,868	10%
Total Auxiliary Enterprises	12,439,513	9,032,276	73%	8,183,043	849,233	10%
Total Operating Expenditures	\$ 112,556,719	\$ 81,673,129	73%	\$ 77,019,482	\$ 4,653,647	6%



**BLINN COLLEGE DISTRICT**  
**Statement of Expenditures By Category**  
**Month Ended May 31, 2023 and 2022**  
**(75% Of Fiscal Year)**

	Current Fiscal Year 2023			Prior FY	Monthly Variance	
	Budget	Actual	% Actual	Actual	FY23 vs FY22	
		05/31/23	To Budget	05/31/22	Dollars	Percent
<b>Salaries and Wages</b>						
Staff Salaries	\$ 28,490,894	\$ 19,986,879	70%	\$ 17,663,911	\$ 2,322,968	13%
Faculty Salaries	34,235,433	29,203,100	85%	28,372,364	830,736	3%
Benefits	20,071,404	13,993,265	70%	13,465,779	527,486	4%
<b>Total Salaries and Wages</b>	<b>82,797,731</b>	<b>63,183,244</b>	<b>76%</b>	<b>59,502,054</b>	<b>3,681,190</b>	<b>6%</b>
<b>Maintenance and Operations</b>						
Maintenance	1,798,724	1,286,578	72%	1,152,150	134,428	12%
Small Business Development Center	165,000	95,933	58%	97,347	(1,414)	-1%
Travel	2,250,266	1,331,570	59%	953,134	378,436	40%
Services	10,879,152	6,967,566	64%	6,664,422	303,144	5%
Consumables	6,354,155	3,122,628	49%	3,685,913	(563,285)	-15%
Utilities & Telephone	3,443,174	2,559,622	74%	2,313,404	246,218	11%
Insurance	1,092,057	976,459	89%	889,378	87,081	10%
Miscellaneous	1,747,726	907,486	52%	898,658	8,828	1%
Facility Rental	1,614,450	633,121	39%	681,017	(47,896)	-7%
Furniture, Equipment, and Property	414,284	608,922	147%	182,005	426,917	235%
<b>Total Maintenance and Operations</b>	<b>29,758,988</b>	<b>18,489,885</b>	<b>62%</b>	<b>17,517,428</b>	<b>972,457</b>	<b>6%</b>
<b>Total Operating Expenditures</b>	<b>112,556,719</b>	<b>81,673,129</b>	<b>73%</b>	<b>77,019,482</b>	<b>4,653,647</b>	<b>6%</b>
<b>Non-Operating Expenditures</b>						
Replacement and Renovations				1,080,216	(1,080,216)	-100%
Capital Projects - Budgeted				140,204	(140,204)	-100%
Contingency				-		
Debt Service	8,743,119	8,743,119	100%	8,745,994	(2,875)	0%
<b>Total Non-Operating Expenditures</b>	<b>8,743,119</b>	<b>8,743,119</b>	<b>100%</b>	<b>9,966,414</b>	<b>(1,223,295)</b>	<b>-12%</b>
<b>Total Expenditures</b>	<b>\$ 121,299,838</b>	<b>\$ 90,416,248</b>	<b>75%</b>	<b>\$ 86,985,896</b>	<b>\$ 3,430,352</b>	<b>4%</b>
<b>Non-Budgeted Capital Projects</b>						
<b>Capital Projects - Bond Funds</b>						
2019 Bond Project - STEI Building	\$ -			\$ 1,722,831		
2020 Bond Project - RELIS II				9,255,900		
	<u>\$ -</u>			<u>\$ 10,978,731</u>		
<b>Master Plan Projects - Unrestricted Reserves</b>						
Brenham Campus Projects	\$ 1,941,817			\$ 3,868,802		
Bryan Campus Projects	609,171			334,626		
RELLIS Campus Projects	1,457,440			5,835,346		
	<u>\$ 4,008,428</u>			<u>\$ 10,038,774</u>		
<b>Property Purchases</b>						
Brenham Campus Property Purchase	\$ 799,984			\$ 23,000		
Bryan Campus Property Purchase						
	<u>\$ 799,984</u>			<u>\$ 23,000</u>		
R&R - Unrestricted Cash	<u>\$ 3,280,242</u>					
<b>2021 Ice Storm</b>						
Insurance Proceeds	\$ 6,746,826			\$ 6,083,955		
<b>Disaster Repairs</b>						
Brenham Campus	6,068,381			5,481,734		
Bryan Campus	395,741			364,669		
RELLIS Campus	4,883			4,883		
Schulenburg Campus	428			428		
Insurance Less Expenditures	<u>\$ 277,393</u>			<u>\$ 232,241</u>		
<b>2021 Hail Storm</b>						
Insurance Proceeds	\$ 129,451			\$ 129,451		
<b>Disaster Repairs</b>						
Bryan Campus	83,527			83,527		
Insurance Less Expenditures	<u>\$ 45,924</u>			<u>\$ 45,924</u>		
<b>2022 Winter Storm</b>						
Insurance Proceeds	\$ 375,820					
<b>Disaster Repairs</b>						
Brenham Campus	218,215					
Insurance Less Expenditures	<u>\$ 157,605</u>					

**BLINN COLLEGE DISTRICT**  
**Statement of Net Position**  
**May 31, 2023 and 2022**

	2023	2022	Monthly Variance FY23 vs FY22	
			Dollars	Percent
<b>Assets</b>				
Cash in banks and petty cash ( C )	\$ 35,852,654	\$ 35,184,834	\$ 667,820	2%
Cash in investment pools ( C )	14,184,054	40,007,439	(25,823,385)	-65%
Scholarship fund Investments ( C )	1,285,536	643,354	642,182	100%
Bond Reserve fund Investments ( C )	8,286,483	8,722,139	(435,656)	-5%
Capital and deferred Maintenance Reserve Investments	15,004,560	15,000,000	4,560	0%
Technology Project Reserve Investments	2,038,417	2,012,133	26,284	1%
Auxiliary Project Reserve Investments	55,177	727,423	(672,246)	-92%
Construction and Restricted Fund Investments ( C )		1,801,371	(1,801,371)	-100%
Certificate of Deposit and Treasury( C )	51,461,911	32,963,067	18,498,844	56%
Accounts Receivable				
Student tuition and fees (net)	16,969,414	14,893,896	2,075,518	14%
State appropriations	7,225,883	7,225,881	2	0%
Other (A1)	3,678,309	2,587,495	1,090,814	42%
Other assets	1,140,248	384,589	755,659	196%
Capital assets (net) (B)	229,517,425	200,041,461	29,475,964	15%
<b>Total Assets</b>	<b>386,700,071</b>	<b>362,195,082</b>	<b>24,504,989</b>	<b>7%</b>
<b>Deferred Outflows</b>				
Deferred outflows related to OPEB (GASB 75)	13,937,410	17,448,279	(3,510,869)	-20%
Deferred outflows related to pensions (GASB 68)	7,678,463	10,096,571	(2,418,108)	-24%
<b>Total Deferred Outflows</b>	<b>21,615,873</b>	<b>27,544,850</b>	<b>(5,928,977)</b>	<b>-22%</b>
<b>Liabilities</b>				
Accounts payable	5,416,308	4,122,822	1,293,486	31%
Accrued payroll liabilities	6,139,909	5,817,788	322,121	6%
Deposits Payable	73,396	77,200	(3,804)	-5%
Agency Funds (A2)	825,468	601,734	223,734	37%
Deferred Revenues				
Student Revenue (A3)	20,675,708	18,014,578	2,661,130	15%
Grants and Contracts	57,117	56,005	1,112	2%
Bonds payable (B)	110,159,559	115,220,208	(5,060,649)	-4%
Lease Liability	10,584,886		10,584,886	100%
Net pension liability related to OPEB (GASB 75)	63,741,752	60,560,299	3,181,453	5%
Net pension liability related to pensions (GASB 68)	10,718,973	22,487,626	(11,768,653)	-52%
<b>Total Liabilities</b>	<b>228,393,076</b>	<b>226,958,260</b>	<b>1,434,816</b>	<b>1%</b>
<b>Deferred Inflows</b>				
Deferred inflows related to OPEB (GASB 75)	10,975,224	15,416,794	(4,441,570)	-29%
Deferred inflows related to pensions (GASB 68)	12,744,782	4,940,758	7,804,024	158%
<b>Total Deferred Inflows</b>	<b>23,720,006</b>	<b>20,357,552</b>	<b>3,362,454</b>	<b>17%</b>
<b>Net Assets</b>				
Invested in capital assets, net of related debt	105,286,816	101,200,224	4,086,592	4%
Leases	13,135,693		13,135,693	100%
Student aid	1,552,558	2,160,632	(608,074)	-28%
Debt service	8,946,867	8,918,600	28,267	0%
Unrestricted	15,615,506	20,316,342	(4,700,836)	-23%
Current year increase (decrease) in Net Assets	11,665,422	9,828,322	1,837,100	19%
<b>Total Net Assets</b>	<b>156,202,862</b>	<b>142,424,120</b>	<b>13,778,742</b>	<b>10%</b>
<b>Total Liabilities, Deferred Inflows, &amp; Net Assets</b>	<b>\$ 408,315,944</b>	<b>\$ 389,739,932</b>	<b>\$ 18,576,012</b>	<b>5%</b>

**Notes**

(A) See the accompanying **Supplementary Information schedule**

(B) Balances for each period are the prior fiscal year end balance (i.e. 8/31/2023 balance is the 8/31/2022 ending balance):

Capital Assets (net) - Capitalizable asset expenditures and the depreciation allowance are recorded at the fiscal year-end

Bonds Payable - Debt Service payments are recorded in the Statement of Current Operating Funds - Expenditures during the fiscal year are reclassified to Net Assets at the fiscal year

Net Assets - The increase (decrease) in Net Assets are allocated at the end of the fiscal year.

( C ) See the current period **Investment Report By Fund** for the detail of these accounts

**BLINN COLLEGE DISTRICT**  
**Statement of Net Position**  
**Supplementary Information**  
**May 31, 2023 and 2022**

	2023	2022
<b>(1) Other Receivables</b>		
Third Party Billings (TX Tomorrow, etc.) (a)	\$ 1,502,052	\$ 1,512,989
Property Tax Receivable	23,777	19,726
Accrued Interest (b)	722,042	127,651
Gov't Agency receivables (SBDC, TWC, etc.) (c)	101,006	86,998
Miscellaneous (d)	479,677	149,759
Student Loans (e)	849,755	690,372
	<b>\$ 3,678,309</b>	<b>\$ 2,587,495</b>
<b>(2) Agency Funds</b>		
Scholarship Checks	<b>\$ 825,468</b>	<b>601,734</b>
<b>(3) Deferred Revenue</b>		
Summer I		
Tuition & Fees	4,636,327	3,913,457
Auxiliary Housing & Meals and Parking	14,460	10,040
Summer II		
Tuition & Fees	2,062,909	1,887,033
Auxiliary Housing & Meals and Parking	24,940	34,730
Fall		
Tuition & Fees	12,898,612	10,829,988
Auxiliary Housing & Meals and Parking	1,038,460	1,339,330
	<b>\$ 20,675,708</b>	<b>\$ 18,014,578</b>

**Notes**

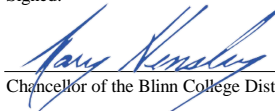
- (a) Third party collections have increased since February 2022.
- (b) The increase in accrued interest is directly related to the increase in interest rates during FY 2023.
- (c) The increase in government agency receivables is due to variances in student federal and state grant awards.
- (d) The change in miscellaneous receivables is due to the timing of when Foundation scholarships post.
- (e) The increase in student loans is due to an increase in private student loans.

**BLINN COLLEGE DISTRICT  
INVESTMENT REPORT BY FUND  
May 31, 2023**

	Coupon Interest Rate	Book Value 04/30/2023	Receipts	Interest Earnings	Distributions	Book Value 05/31/2023	Market Value 05/31/2023
<b>Unrestricted Cash and Cash Equivalents</b>							
Brenham National Bank		5,183,336.02	39,623,606.07	13,565.72	(39,588,501.78)	5,232,006.03	5,232,006.03
Bank of Brenham		30,403,609.25		110,713.82		30,514,323.07	30,514,323.07
Fayetteville Bank		43,437.89	6,784.85		(15.96)	50,206.78	50,206.78
Citizens State Bank		153,112.66	3,439.10		(108,615.37)	47,936.39	47,936.39
Cash on Hand - Petty Cash		8,181.44				8,181.44	8,181.44
<b>Subtotal Cash in Bank and Petty Cash</b>		<b>35,791,677.26</b>	<b>39,633,830.02</b>	<b>124,279.54</b>	<b>(39,697,133.11)</b>	<b>35,852,653.71</b>	<b>35,852,653.71</b>
TexPool - Unrestricted Operating Fund Balance	5.05%	107,734.48		457.82		108,192.30	108,192.30
Lone Star/General Acct. - Unrestricted	5.04%	442,028.74		16,313.01		458,341.75	458,341.75
LOGIC - Unrestricted	5.19%	13,267,314.02		58,443.05		13,325,757.07	13,325,757.07
TexStar - Unrestricted	5.05%	290,516.16		1,245.33		291,761.49	291,761.49
<b>Subtotal Cash in Investment Pools</b>		<b>14,107,593.40</b>	<b>-</b>	<b>76,459.21</b>	<b>-</b>	<b>14,184,052.61</b>	<b>14,184,052.61</b>
U.S. Treasury Bill 912828WJ5 05/15/24	4.80%	3,244,110.00		-		3,244,110.00	3,244,110.00
Bank of Brenham CD Investment		38,177,946.41				38,177,946.41	38,177,946.41
Multi-Bank Securities CD Investment		10,039,855.00				10,039,855.00	10,039,855.00
<b>Subtotal Cash in Certificates of Deposit and Treasury</b>		<b>51,461,911.41</b>	<b>-</b>	<b>-</b>	<b>-</b>	<b>51,461,911.41</b>	<b>51,461,911.41</b>
<b>Unrestricted Investments Reserved for Auxiliary</b>							
TD Ameritrade - Unrestricted		55,146.47		30.56		55,177.03	55,177.03
<b>Subtotal Unrestricted Investments Reserved for Auxiliary</b>		<b>55,146.47</b>	<b>-</b>	<b>30.56</b>	<b>-</b>	<b>55,177.03</b>	<b>55,177.03</b>
<b>Unrestricted Investments Reserved for Technology</b>							
TD Ameritrade - Unrestricted		2,037,288.23		1,129.06		2,038,417.29	2,038,417.29
<b>Subtotal Unrestricted Investments Reserved for Technology</b>		<b>2,037,288.23</b>	<b>-</b>	<b>1,129.06</b>	<b>-</b>	<b>2,038,417.29</b>	<b>2,038,417.29</b>
<b>Unrestricted Investments Reserved for Capital Projects</b>							
LoneStar Unrestricted	5.04%	3,368,969.20				3,368,969.20	3,368,969.20
Unrealized Gain (Loss) on Unrestricted Investments		(573,032.17)		(1,875.72)		(574,907.89)	(574,907.89)
TD Ameritrade - Unrestricted		12,204,062.97		6,436.03		12,210,499.00	12,210,499.00
<b>Subtotal Unrestricted Investments Reserved for Capital</b>		<b>15,000,000.00</b>	<b>-</b>	<b>4,560.31</b>	<b>-</b>	<b>15,004,560.31</b>	<b>15,004,560.31</b>
<b>Total Unrestricted Cash and Cash Equivalents</b>		<b>118,453,616.77</b>	<b>39,633,830.02</b>	<b>206,458.68</b>	<b>(39,697,133.11)</b>	<b>118,596,772.36</b>	<b>118,596,772.36</b>
<b>Scholarship Fund Investments</b>							
TexPool - Scholarship Fund	5.05%	846,937.11		3,599.08		850,536.19	850,536.19
Blue Bell Creameries, L.P.		435,000.00				435,000.00	435,000.00
<b>Subtotal Endowment &amp; Scholarship Fund Investments</b>		<b>1,281,937.11</b>	<b>-</b>	<b>3,599.08</b>	<b>-</b>	<b>1,285,536.19</b>	<b>1,285,536.19</b>
<b>Bond Reserve Fund Investments</b>							
TD Ameritrade - Bond Reserve		4,349,799.11		1,478.98		4,351,278.09	4,351,278.09
Unrealized Gain (Loss) on Bond Reserve		(373,195.60)		(2,607.69)		(375,803.29)	(375,803.29)
FHLB - 313382AX1 (Due 03/10/23)		-				-	-
Unrealized Gain (Loss) on Bond Reserve Investments		-				-	-
U.S. Treasury Bill 912828WJ5 05/15/24	4.80%	3,087,058.00				3,087,058.00	3,087,058.00
U.S. Treasury Bill 91282CCC3 05/15/24	4.51%	1,223,950.24				1,223,950.24	1,223,950.24
<b>Subtotal Bond Reserve Fund Investments</b>		<b>8,287,611.75</b>	<b>-</b>	<b>(1,128.71)</b>	<b>-</b>	<b>8,286,483.04</b>	<b>8,286,483.04</b>
<b>Total Restricted Investments</b>		<b>9,569,548.86</b>	<b>-</b>	<b>2,470.37</b>	<b>-</b>	<b>9,572,019.23</b>	<b>9,572,019.23</b>
<b>Total Cash, Cash Equivalents and Investments</b>		<b>128,023,165.63</b>	<b>39,633,830.02</b>	<b>208,929.05</b>	<b>(39,697,133.11)</b>	<b>128,168,791.59</b>	<b>128,168,791.59</b>
<b>Benchmark Rate</b>							
		05/31/2023	04/30/2023	03/31/2023	02/28/2023	01/31/2023	12/31/2022
182 Day T-Bill		5.17%	4.84%	4.65%	4.84%	4.68%	4.60%
One Year Treasury		5.22%	4.60%	4.55%	5.05%	4.79%	4.72%
Two Year Treasury		4.46%	3.86%	4.02%	4.67%	4.21%	4.40%
Five Year Treasury		3.81%	3.43%	3.63%	4.16%	3.63%	3.94%

This schedule is in compliance with the Public Funds Investment Act and the Investment Policy of Blinn College

Signed:

  
Chancellor of the Blinn College District

  
Vice Chancellor, Business and Finance/CFO

  
Assistant Vice Chancellor, Business and Finance

SUPPLEMENTARY SCHEDULES AND GRAPHS

**BLINN COLLEGE DISTRICT**  
**Certificate of Deposit and US Treasury Note Investment Detail**  
**May 31, 2023**

	<b>Maturity</b>	<b>Rate</b>	<b>Book Value 04/30/2023</b>	<b>Receipts</b>	<b>Interest Earnings</b>	<b>Distributions</b>	<b>Book Value 05/31/2023</b>
<b>Bank of Brenham</b>							
Certificate of Deposit 6932	06/09/23	2.63%	\$ 2,268,612.70				\$ 2,268,612.70
Certificate of Deposit 7105	07/26/23	2.79%	5,000,000.00				5,000,000.00
Certificate of Deposit 4144	09/19/23	3.05%	2,070,702.52				2,070,702.52
Certificate of Deposit 6072	10/07/23	3.83%	2,078,527.83				2,078,527.83
Certificate of Deposit 6500	10/19/23	0.75%	3,038,624.80				3,038,624.80
Certificate of Deposit 6081	11/07/23	4.24%	2,081,953.75				2,081,953.75
Certificate of Deposit 6086	11/07/23	4.52%	2,067,189.74				2,067,189.74
Certificate of Deposit 6502	11/19/23	0.90%	3,042,733.39				3,042,733.39
Certificate of Deposit 6093	01/09/24	4.25%	2,610,940.57				2,610,940.57
Certificate of Deposit 6094	02/09/24	4.32%	2,615,890.16				2,615,890.16
Certificate of Deposit 6481	02/19/24	4.32%	3,036,216.54				3,036,216.54
Certificate of Deposit 6096	03/09/24	4.64%	2,611,213.72				2,611,213.72
Certificate of Deposit 6482	03/19/24	4.64%	3,038,362.59				3,038,362.59
Certificate of Deposit 6097	04/09/24	3.83%	2,616,978.10				2,616,978.10
<b>Total Bank of Brenham CD Investment</b>			<b>\$ 38,177,946.41</b>	<b>\$ -</b>	<b>\$ -</b>	<b>\$ -</b>	<b>\$ 38,177,946.41</b>
<b>Multi-Bank Securities</b>							
Customers Bank	09/06/23	3.10%	\$ 242,000.00				\$ 242,000.00
Amerant Bank NA	09/07/23	3.00%	242,000.00				242,000.00
Santander Bank	09/07/23	3.10%	242,000.00				242,000.00
Wasatch Peaks	09/07/23	3.20%	249,000.00				249,000.00
First Republic Bank	09/08/23	3.00%	242,000.00				242,000.00
Forte Bank	09/08/23	2.85%	249,000.00				249,000.00
Parkway Bank and Trust Company	09/08/23	3.00%	242,000.00				242,000.00
Signature Bank	09/08/23	3.05%	242,000.00				242,000.00
Southern Bank	09/08/23	2.85%	243,000.00				243,000.00
Beal Bank, Texas State Bank	09/13/23	3.10%	242,000.00				242,000.00
Citizens Bank	09/14/23	3.25%	242,000.00				242,000.00
Oceanfirst Bank	09/14/23	3.05%	242,000.00				242,000.00
Apex Bank	09/15/23	3.15%	249,000.00				249,000.00
First Oklahoma Bank	09/15/23	3.05%	249,000.00				249,000.00
First Technology Federal Credit Union	09/15/23	3.40%	249,000.00				249,000.00
Luminate Bank	09/15/23	3.10%	249,000.00				249,000.00
Sharonview Federal Credit Union	09/15/23	3.35%	249,000.00				249,000.00
Texas Bank	09/15/23	3.10%	242,000.00				242,000.00
BMW Bank of North America	09/18/23	0.35% *	241,862.00				241,862.00
Preferred Bank	09/22/23	3.10%	249,000.00				249,000.00
Safra National Bank	10/10/23	3.05%	246,000.00				246,000.00
Bank of California	10/30/23	1.95% *	198,118.00				198,118.00
DMB Community Bank	12/08/23	3.00%	249,000.00				249,000.00
Bell Bank	01/16/24	3.20%	249,000.00				249,000.00
First Carolina Bank	01/16/24	3.20%	249,000.00				249,000.00
California First National Bank	02/28/24	1.30% *	238,875.00				238,875.00
Ally Bank	03/08/24	3.25%	246,000.00				246,000.00
Morgan Stanley Bank	03/08/24	3.20%	246,000.00				246,000.00
UBS Bank USA	03/08/24	3.25%	249,000.00				249,000.00
BMO Harris Bank	03/11/24	3.15%	246,000.00				246,000.00
Connection Bank	03/12/24	3.10%	249,000.00				249,000.00
Discover Bank	03/13/24	3.30%	245,000.00				245,000.00
City & County	03/14/24	3.40%	249,000.00				249,000.00
Bankers Bank of the West	03/15/24	3.15%	249,000.00				249,000.00
JPMorgan Chase Bank	03/15/24	3.00%	247,000.00				247,000.00
Morgan Stanley Pvt Bank	03/15/24	3.45%	246,000.00				246,000.00
Old Missouri Bank	03/15/24	3.20%	249,000.00				249,000.00
Union Square Credit Union	03/15/24	3.50%	249,000.00				249,000.00
Credit Union of Texas	03/18/24	3.45%	249,000.00				249,000.00
Forbright Bank	03/18/24	3.30%	249,000.00				249,000.00
Northern Bank & Trust Company	03/18/24	3.40%	245,000.00				245,000.00
<b>Total Multi-Bank Investment</b>			<b>\$ 10,039,855.00</b>	<b>\$ -</b>	<b>\$ -</b>	<b>\$ -</b>	<b>\$ 10,039,855.00</b>
<b>US Treasury Notes</b>							
U.S. Treasury Bill 91282WJ5	05/15/24	4.80%	\$ 6,331,168.00				\$ 6,331,168.00
U.S. Treasury Bill 91282CCC3	05/15/24	4.51%	1,223,950.24				1,223,950.24
			<b>\$ 7,555,118.24</b>	<b>\$ -</b>	<b>\$ -</b>	<b>\$ -</b>	<b>\$ 7,555,118.24</b>
<b>Total CD and US Treasury Note Investment</b>			<b>\$ 55,772,919.65</b>	<b>\$ -</b>	<b>\$ -</b>	<b>\$ -</b>	<b>\$ 55,772,919.65</b>

\*Discount on CD purchase

**BLINN COLLEGE DISTRICT**  
**Analysis of Replacements & Renovations**  
**and Capital Projects**  
**As of May 31, 2023**

<b>Project Description</b>	<b>Monthly Transactions May-23</b>	<b>Project Fiscal Year to Date as of 05/31/2023</b>	<b>Total Project to Date as of 05/31/2023</b>
<b>Capital Projects - Bond Funds</b>			
Brenham Science, Tech, Engineering and Innovation Building	944	7,366	31,917,383
RELLIS Phase II	3,690	1,457,440	29,490,502
<b>Total Bond Projects in Progress</b>	<b>4,634</b>	<b>1,464,806</b>	<b>61,407,885</b>
<b>Master Plan Projects</b>			
Bryan New Administration/Student Services Building	277,657	609,171	1,122,983
Brenham eSports Renovation at Mill Creek		151,129	552,709
Brenham Old Main Renovation		319,124	3,440,307
Brenham College Ave and Sidewalk	2,369	33,529	110,413
Brenham Dreyer Field	6,253	1,154,768	3,483,369
Brenham Parking Lot K	2,063	53,747	53,747
Brenham Holleman, Memorial, and Solons Halls Demolition	5,450	222,154	690,925
<b>Total Master Plan Projects in Progress</b>	<b>293,792</b>	<b>2,543,622</b>	<b>9,454,453</b>
<b>Capital Projects</b>			
Bryan Chiller Replacement and Automation	415,681	506,060	943,559
Bryan Interior Upgrades and Access	60,606	273,005	522,178
Bryan Second Floor Renovation	28,737	48,498	48,498
Bryan A C D Roof Upgrades	398,162	416,162	416,162
Brenham BCPA HVAC Upgrades		31,905	31,905
Brenham BCPA Roof & Gutter Replacements	2,362	22,612	22,612
Brenham Campus Old Main Roof		36,218	36,218
Brenham Campus Property Purchase		799,984	799,984
<b>Total Capital Projects Reserve Funds</b>	<b>905,548</b>	<b>2,134,444</b>	<b>2,821,116</b>
<b>Total Repairs &amp; Renovations</b>	<b>335,028</b>	<b>1,945,782</b>	<b>1,945,782</b>
<b>Total of Construction and R&amp;R</b>	<b>1,539,002</b>	<b>8,088,654</b>	<b>75,629,236</b>

BLINN COLLEGE FOUNDATION SCHOLARSHIPS AND ENDOWMENTS  
As of May 31, 2023

DESCRIPTION	CORPUS	Accum Earning September 1, 2022	Donations	Interest Earned YTD	Scholarships Awarded	Book Balance May 31, 2023
ADN FACULTY	\$ 15,000.00	\$ 192.14	\$ -	\$ 498.21	\$ -	\$ 15,690.35
ALPHA BETA ALUMNI	11,000.00	1,223.68		383.15	(540.00)	12,066.83
ALUMNI AND FRIENDS	45,000.00	6,357.76		1,666.45	(559.00)	52,465.21
ANDERSON, AGNES "ANDY"	-	915.42		29.62	(40.00)	905.04
ANDERSON, AGNES KARLIK - NURSING	21,760.00	2,860.22		797.49	(992.00)	24,425.71
ANDERSON, CLINTON G.	10,000.00	1,168.93		361.33	(494.00)	11,036.26
ANDERSON, ELTON B.	-	193.60		6.34	-	199.94
APPEL JR., MARY LOU AND ROBERT	16,525.00	1,300.63		572.05	(394.00)	18,003.68
APPEL, BILLYE JEAN AND ARLEIGH	19,450.57	1,570.23		675.96	(929.00)	20,767.76
APPEL, CAROLINE AND ROBERT C.	11,000.00	974.13		375.87	(529.00)	11,821.00
ARLITT, JACK WALTER	50,577.97	4,622.30		1,762.61	(2,225.00)	54,737.87
ARLITT, JACK - TECHNICAL	27,225.16	1,751.12		911.93	(1,168.00)	28,720.20
ARLITT, OLEIS H.	110,675.00	7,354.58		3,763.88	(5,273.00)	116,520.46
ASHORN BROTHERS	19,285.00	2,532.09		694.38	(985.00)	21,526.47
ATKINSON, DR. - ALUMNI LETTERMEN	17,520.00	1,522.10		606.51	(860.00)	18,788.61
ATKINSON, EVA BEAZLEY	12,000.00	939.60		405.58	(572.00)	12,773.18
ATKINSON, KATHERINE SMITH	34,000.00	2,640.05		1,169.40	(1,619.00)	36,190.46
ATKINSON, NANCY SHEPPEARD	15,945.00	1,228.50		547.72	(759.00)	16,962.22
ATKINSON, PRESIDENT EMERITUS JAMES H.	15,750.00	1,395.05		540.53	(758.00)	16,927.58
BABBITT, AUGGIE - PTA	27,811.32	3,766.17		1,011.22	(1,256.00)	31,332.71
BARTON, OLIVE MAE AND SARA ANN NURSING			15,000.00	150.56	-	15,150.56
BERGER, INEZ - REAL ESTATE SCHOLAR	15,950.00	2,665.09		585.16	(823.00)	18,377.25
BERRY, NANCY AND LEONARD	20,000.00	1,385.21		673.03	(862.00)	21,196.24
BISHOP, ANN SCHWARTZ	15,050.00	1,413.59	1,000.00	554.17	(662.00)	17,355.76
BLINN BIOLOGY FOR STUDENTS	15,000.00	1,666.61		546.55	-	17,213.16
BLINN COLLEGE ALUMNI AND FRIENDS	12,200.19	1,783.62		448.03	(618.00)	13,813.84
BLINN COLLEGE FOUNDATION - BRENHAM	53,370.03	3,794.34		1,819.60	(2,567.00)	56,416.97
BLINN COLLEGE FOUNDATION - BRYAN	51,873.00	3,690.90		1,790.79	(2,462.00)	54,892.69
BLINN COLLEGE PROFESSIONAL ASSOCIATION	24,615.00	1,921.73		849.94	(1,173.00)	26,213.68
BLINN COLLEGE TECHNICAL ED CENTER	1,000,279.02	219,215.74		39,991.35	-	1,259,486.11
BOB BULLOCK ENDOWED VOCATIONAL	43,941.79	3,074.59		1,498.59	(2,089.00)	46,425.96
BOCKHORN, DR. OSCAR AND IRENE	20,000.00	2,094.29		723.36	(891.00)	21,926.65
BOEHM SR., HENRY AND ETHEL	18,797.78	1,394.66	500.00	656.21	(893.00)	20,455.65
BOEHM, DR. AND MRS. HENRY J.	26,757.64	1,735.55		910.09	(1,259.00)	28,144.28
BOEHM, DR. HENRY J.	25,000.00	1,777.29		855.04	(1,079.00)	26,553.33
BOEHM, MR. AND MRS. ROBERT WILLIAM	16,000.00	1,801.71	500.00	589.07	(787.00)	18,103.78
BOEHM, TEDDY VANDERWERTH			15,466.20	442.89	-	15,909.09
BOEHNEMANN, JANE	25,265.07	2,315.09		898.62	(1,152.00)	27,326.78
BOEHNKE, BEN W.	20,548.44	1,831.48		723.96	(1,000.00)	22,103.88
BOEHNKE, SUE	14,364.93	1,590.65	4,050.00	632.17	(705.00)	19,932.74
BOEHM WEHRING, MR. GLENN AND KATHRYN	15,050.00	1,463.83		518.79	(730.00)	16,302.61
BOENKER, HENRY AND MARTHA AND ESTHER	15,000.00	1,485.62		525.02	(729.00)	16,281.64
BOHNE, WILBURN "BILL"	633,009.10	55,090.38		22,099.52	(26,382.00)	683,817.00
BOHNE, WILBURN "BILL" TECHNICAL	305,000.00	43,383.21		11,424.67	-	359,807.88
BOSWELL JR., ANCEL	86,728.04	7,029.16		3,008.34	(2,747.00)	94,018.54
BRAZOS COUNTY - GO TEXAN	40,000.00	12,254.99		1,713.64	-	53,968.63
BRENHAM CUBS BASEBALL	20,000.00	3,408.68	230.00	768.75	-	24,407.44
BRENHAM ELKS (B.P.O.E.#979)	40,850.00	8,698.98		1,596.08	(1,250.00)	49,895.06
BRENHAM EVENING LIONS CLUB	18,200.00	1,980.00		643.04	(897.00)	19,926.04
BRENHAM NOON LIONS CLUB	15,000.00	1,205.76		508.71	(716.00)	15,998.46
BRENHAM ROTARY CLUB	37,786.00	2,066.11		1,300.44	(1,319.00)	39,833.55
BRENHAM UNIVERSITY WOMEN'S I - 1994	22,671.00	1,843.53		803.92	-	25,318.45
BRENHAM UNIVERSITY WOMEN'S II - 2003	22,151.00	2,103.74	300.00	796.86	-	25,351.60
BROESCHE, TRAVIS AND LUCILLE	28,900.00	2,089.51		986.81	(1,377.00)	30,599.32
BROWN FAMILY	15,000.00	1,370.21		521.35	(724.00)	16,167.56
BRYAN, SHARON AND CHIP	25,000.00	165.22	25,000.00	947.11	-	51,112.33
BRYANT, RAYMOND G.	53,286.75	4,093.87		1,826.90	(2,563.00)	56,644.52
BUCK, PORSCHA RAE	15,000.00	1,186.39		523.69	(715.00)	15,995.08
BULLARD, BRITT AND ERRIN	35,429.90	2,221.68		1,206.14	(1,518.00)	37,339.72
BURKHART, SUSAN	19,680.00	1,809.23		684.39	(950.00)	21,223.62
BURLESON COUNTY - GO TEXAN	25,000.00	5,826.71		988.54	(682.00)	31,133.26
BURT, WALDO F.	14,293.29	1,641.03		507.48	(704.00)	15,737.80
BURTON LIONS CLUB / SID B. STEVENSON	31,237.40	2,887.50		1,097.69	(1,000.00)	34,222.59
CALVERT, JERRY AND JAN	64,681.02	10,346.85		2,438.64	(2,182.00)	75,284.52
CANTEY FAMILY	17,250.00	1,613.86	1,000.00	632.90	(838.00)	19,658.76
CARNES, WILLIAM KENNETH	10,025.00	981.73		346.02	(486.00)	10,866.75
CARRINGTON, J. B.	6,465.00	549.32		224.51	(310.00)	6,928.83



BLINN COLLEGE FOUNDATION SCHOLARSHIPS AND ENDOWMENTS  
As of May 31, 2023

DESCRIPTION	CORPUS	Accum Earning September 1, 2022	Donations	Interest Earned YTD	Scholarships Awarded	Book Balance May 31, 2023
CARTER, TRACY AND TAMARA I	25,000.00	1,340.60		853.15	(1,062.00)	26,131.75
CARTER, TRACY AND TAMARA II	25,000.00	1,340.60		860.69	(354.00)	26,847.29
CHESLEY, MARGARET	68,000.00	4,667.22	2,000.00	2,337.73	(3,212.00)	73,792.96
CHILDREN OF BLINN FACULTY AND STAFF	15,000.00	1,666.61		546.55	-	17,213.16
COATNEY, DOYLE	129,500.00	21,501.59		4,918.43	(3,351.00)	152,569.02
COLLERAIN SR., JOSEPH B.	60,000.00	7,060.86		2,170.30	(2,964.00)	66,267.16
COMMANDER, ROBERT DAVID	10,600.00	999.56		363.56	(513.00)	11,450.13
CRAWFORD, CHARLES AND GRACE	21,000.00	1,869.66		741.83	(926.00)	22,685.49
CUTRIGHT AND ALLEN ARCHITECTS	17,500.00	1,444.16		603.33	(837.00)	18,710.50
DALLMEYER, C. D. - BRENHAM WHOLESALE	15,000.00	1,234.59		509.58	(718.00)	16,026.17
DEBBAN-EATON NURSING	19,459.70	2,726.08		717.76	(981.00)	21,922.54
DERRICK, GERALD P.	16,057.94	2,540.28		596.14	(831.00)	18,363.36
DIETRICH, OSCAR AND LILLIE M.	20,000.00	1,615.92		678.19	(966.00)	21,328.11
DIETRICH, VIRGINIA AND RAYMOND	15,000.00	1,905.19		547.58	(681.00)	16,771.76
DIETRICH, W. O. AND BOBBIE	19,562.14	3,266.66		748.65	-	23,577.45
DILLON, JAMES F. - VFW POST 7104-MELVIN H. REDDEHASE	15,125.00	1,984.97		561.10	-	17,671.07
DOBSON, LILLIAN ROSSING - RN	10,000.00	1,335.72		369.17	(256.00)	11,448.89
DONISI, BEATRICE BEDNAR	30,300.00	2,641.15		1,059.87	(664.00)	33,337.02
DREYER, LEROY AND JUNE	16,737.99	1,431.82		578.41	(816.00)	17,932.22
DUJKA, JOHN EXCELLENCE	15,000.00	192.80		498.22	-	15,691.02
DUREE, SAMUEL	20,000.00	1,759.26		697.25	(877.00)	21,579.51
DURHAM, JAMES	300,000.00	23,002.71		10,328.84	(13,205.00)	320,126.55
DUSOLD, DIANNE A.M.C.H.S.	15,000.00	1,121.89		525.52	(650.00)	15,997.41
EDWARDS, ORA LEE - VOCATIONAL NURSING SCH.	15,673.10	1,476.07		557.90	(791.00)	16,916.07
EHLERT, M.H. AND IRENE	20,000.00	5,503.95		815.11	(1,127.00)	25,192.07
EHRIG, ARTHUR H. AND MYRTLE	170,000.00	11,446.36		5,829.63	(8,020.00)	179,255.98
EICHLER, E.	20,000.00	1,748.16	3,470.50	690.85	(877.00)	25,032.51
ELLISON, CHUCK AND TEDI	20,000.00	849.99		667.85	(844.00)	20,673.84
EVERSBERG AND DRUMM	10,000.00	1,104.07		347.35	(512.00)	10,939.41
FIRST FINANCIAL TRUST BRYAN FAMILY	15,000.00	910.73		500.75	(641.00)	15,770.48
FLENCHEER, BEN AND BETSY	15,000.00	1,305.07		531.50	(657.00)	16,179.57
FRANKE, JOEL & PAM	17,720.00	1,761.63		620.72	(870.00)	19,232.35
FREEMAN, N. W. AND NORMA	45,000.00	3,531.63		1,546.41	(2,162.00)	47,916.04
FRIENDS OF BLINN-FAYETTE COUNTY	17,241.50	1,903.00		623.05	(846.00)	18,921.55
FUCHS, ROSA LEE	26,409.53	1,987.21		894.52	(1,282.00)	28,009.25
GERMANIA FARM MUTUAL INSURANCE ASSOCIATION	16,885.00	1,282.17		581.05	(803.00)	17,945.21
GERMANIA INSURANCE	25,000.00	1,517.88		869.62	-	27,387.50
GILES, ROBERT L. - PTK	19,739.54	1,558.95		677.90	(961.00)	21,015.39
GONZALES JR., JOSE GUADALUPE	15,000.00	192.80		498.22	-	15,691.02
GRAHAM MASONIC LODGE I	20,000.00	1,770.80		688.75	(1,521.00)	20,938.55
GRAHAM MASONIC LODGE II BLINN EDUCATORS	15,000.00	956.02		523.25	-	16,479.27
GRAHAM MASONIC LODGE III ALL PAST MASTERS	15,500.00	979.03		527.02	(500.00)	16,506.05
GRIFFIN, DAVID KEITH	11,000.00	1,161.27		381.00	(543.00)	11,999.27
HACKEMACK HARPER, CAROL JEAN			25,000.00	33.12	-	25,033.12
HACKEMACK, R. F.	20,000.00	1,739.64	3,470.50	700.60	(876.00)	25,034.74
HALEY, STEVEN C. MEMORIAL THEATER ARTS	14,075.02	893.47		471.73	(603.00)	14,837.22
HALLSTEIN, EDWINA DAY	2,642,452.00	692,123.71		108,901.45	(22,375.30)	3,421,101.86
HALLSTEIN, FRED J. & EDWINA D.	60,000.00	4,622.11		2,053.64	(2,183.00)	64,492.75
HARRINGTON, REESE ELIZABETH	20,000.00	1,758.31		695.68	(877.00)	21,576.99
HARTMAN, FRED - BRENHAM BANNER PRESS	13,950.00	1,270.99		485.43	(673.00)	15,033.43
HASSKARL, KATHERINE MGE BROFF	33,670.00	4,220.47		1,225.85	(1,675.00)	37,441.32
HEINEKE, DR. AND MRS. GUS	29,848.85	2,332.34		1,041.14	(1,422.00)	31,800.32
HEJL, JOHN E. - CALDWELL H.S.	97,500.00	6,622.29		3,321.23	(4,602.00)	102,841.52
HEJL, JOHN E. - CALDWELL H.S. TECHNICAL	40,000.00	20,921.21	300,000.00	10,588.42	-	371,509.63
HELLER, CHARLES A.	16,586.51	1,403.57		566.93	(725.00)	17,832.01
HEMANN, LAWRENCE H.	20,125.00	8,783.79		948.02	-	29,856.81
HENRY, WALTER AND GENEVA HOUSLEY HOLLE	21,500.00	2,125.75		753.52	(1,044.00)	23,335.26
HICKS, KATHRYN KYLE	15,200.12	2,089.39		559.37	(764.00)	17,084.88
HODDE, A.W. JR.	25,500.00	1,610.18		889.03	-	27,999.20
HOLT, JUDY & LARRY	50,000.00	13,070.22	20,000.00	2,302.59	(2,400.00)	82,972.81
HONERKAMP, BETTYE PYLANT - NURSING	18,822.72	1,806.57	200.00	666.30	(664.00)	20,831.60
ISENSEE, MYRTLE GEBERT	105,094.74	9,207.82		3,678.23	(3,487.00)	114,493.79
JANNER, EUGENE	21,549.62	2,639.21		770.37	(1,069.00)	23,890.20
JASTER-KRAUSE TRUST	71,164.83	6,714.57	6.11	2,481.57	(3,467.00)	76,900.09
JONES & CARTER, INC.-PLEDGER KALKOMEY, INC. ENGINE	15,000.00	1,337.54	10,000.00	613.88	(659.00)	26,292.42
KENJURA, ATWOOD	15,130.00	2,226.70		544.02	(767.00)	17,133.72
KNAPP, ERICH - MUSIC	15,000.00	1,341.20		514.27	(659.00)	16,196.47
KNOX, BENJAMIN			28,802.13	253.44	-	29,055.57

BLINN COLLEGE FOUNDATION SCHOLARSHIPS AND ENDOWMENTS  
As of May 31, 2023

DESCRIPTION	CORPUS	Accum Earning September 1, 2022	Donations	Interest Earned YTD	Scholarships Awarded	Book Balance May 31, 2023
KOLWES, ALICE	1,917,080.85	158,310.30		66,317.65	(82,643.00)	2,059,065.80
KOLWES, ALICE - TECHNICAL	300,000.00	48,938.47		11,442.89	-	360,381.35
KRIZAN, DR. A.C. "BUDDY" AND JUDY	17,650.00	1,377.01	1,200.00	633.78	-	20,860.79
KROLCZYK, STEVEN	23,422.22	3,899.95	200.00	879.50	(1,201.00)	27,200.67
KRUSE, BERTHA QUEBE	117,500.00	8,005.86		4,003.93	(5,589.00)	123,920.79
KRUSE, E.F. - BLUE BELL CREAMERIES	54,000.00	4,814.68		1,873.15	(2,600.00)	58,087.83
KRUSE, ED AND EVELYN	50,000.00	10,075.55	100.00	1,940.31	(2,002.00)	60,113.86
KRUSE, ED F.	60,025.00	4,699.07		2,076.86	(2,912.00)	63,888.93
KRUSE, HOWARD W.	16,887.89	2,728.41		616.36	(876.00)	19,356.67
KUBIAK, REP. DAN	10,180.00	1,255.52		359.49	(505.00)	11,290.02
LACINA AND FAMILY, L. J. AND NORMA	118,696.00	7,949.70		4,044.75	(4,742.00)	125,948.46
LAMPE, WADENE	20,000.00	1,976.64		702.65	(886.00)	21,793.29
LANE, DR. MARILYN R.	15,500.00	2,179.46		554.97	(781.00)	17,453.43
LANGE, NORWOOD AND BARBARA	15,793.44	1,832.09	500.00	586.81	(761.00)	17,951.34
LAROCHE, RUTH DALLMEYER	15,075.00	1,289.36		522.67	(723.00)	16,164.03
LAUTER, NEVILEE DIETRICH	15,000.00	1,283.89		519.98	(656.00)	16,147.87
LEHRMANN, OTTO	20,000.00	1,959.31		698.90	(889.00)	21,769.21
LEHRMANN, OTTO Q.	22,000.00	902.65		734.49	(1,034.00)	22,603.15
LETTERMAN	15,000.00	(1,139.50)		410.26	(2,070.00)	12,200.77
LEVIEN, ALFRED CLASS OF 1906	20,145.00	991.20	5,000.00	703.75	(643.00)	26,196.94
LIONS CLUB DISTRICT 2-S5	15,119.26	1,339.15		536.37	(688.00)	16,306.78
LOCKETT, REESE B.	37,500.00	2,769.97	2,000.00	1,335.85	(1,788.00)	41,817.82
LONE STAR SCHOLARSHIP	31,887.90	2,818.45		1,111.95	(1,405.00)	34,413.30
LOOK - LYON	15,000.00	1,155.62		522.67	(714.00)	15,964.28
LOOK-ENGL, ALETHA	15,000.00	1,433.66		515.87	(726.00)	16,223.52
LOVETT, KENNETH	15,000.00	1,161.18		510.87	(714.00)	15,958.04
LUECKEMEYER, ODELL AND WILLIE MAE - WORKFORCE I	25,000.00	4,832.39		978.31	-	30,810.70
LUECKEMEYER, ODELL AND WILLIE MAE - WORKFORCE II	25,000.00	6,203.34		1,023.27	-	32,226.61
MACHAT, TRACY AND JOSEPH, JR. ATHLETIC	21,170.85	1,364.58		721.47	(908.00)	22,348.90
MARSHALL II, OWEN	20,939.97	2,417.07		756.22	(976.00)	23,137.26
MARTIN, CLYDE	22,242.22	2,184.25		778.92	(1,085.00)	24,120.39
MASSEY, CAROLYN	13,261.75	1,173.59		454.90	(582.00)	14,308.24
MAY, JON DEE	15,000.00	1,442.83		532.83	(727.00)	16,248.66
MCHAM, HAYLEY	31,739.68	6,032.78	537.20	1,244.32	-	39,553.98
MILLER, DOTTIE	15,250.00	1,526.88		534.62	(745.00)	16,566.50
MOELLER, WALDO - ACADEMIC I	15,000.00	1,308.02		520.76	(657.00)	16,171.78
MOELLER, WALDO - ACADEMIC II	15,000.00	1,306.83		513.21	(657.00)	16,163.04
MOELLER, WALDO - ACADEMIC III	28,610.00	3,018.51		1,009.93	(1,275.00)	31,363.44
MOELLER, WALDO - WORKFORCE I	20,000.00	3,511.13		771.00	-	24,282.13
MOELLER, WALDO - WORKFORCE II	20,000.00	4,151.54		792.01	-	24,943.55
MOORE FAMILY, H. L. P.	32,500.00	2,143.10		1,107.09	(1,539.00)	34,211.19
MORRIS, THOMAS AND RACHEL BRADHAM SPENCER	18,765.00	1,463.28	1,000.00	664.67	(894.00)	20,998.96
MORROW, CLARENCE & ETTIE RICHBURG	20,000.00	3,320.74		748.52	(1,036.00)	23,033.26
MUNKE ESTATE, LEE C.	51,159.25	4,140.71		1,766.88	(2,444.00)	54,622.84
MUSKE, RONALD LEE	3,000.00	247.63		101.82	(150.00)	3,199.45
MUTSCHER, GUS & GERTIE	18,866.28	1,952.52		664.01	(920.00)	20,562.81
MUTSCHER, GUS STAR OF THE REPUBLIC			25,000.00	219.99	-	25,219.99
MUTSCHER, KENNETH AGRICULTURE	41,004.20	2,356.26		1,384.55	(1,748.00)	42,997.01
NEWMYER, STEVEN K. LEADERSHIP	20,000.00	1,117.38		674.31	(851.00)	20,940.69
NOACK, STEVEN AND RUTH	25,000.00	2,857.66		907.07	(1,144.00)	27,620.73
OELFKE, RALPH AND DAYE H.	194,019.71	18,043.78		6,754.84	(9,423.00)	209,395.33
OMALLEY, RICHARD J. AND MARCENA	18,550.00	1,896.91		651.18	(904.00)	20,194.10
ORDER OF THE EASTERN STAR I	15,000.00	1,823.56		536.52	(678.00)	16,682.07
ORDER OF THE EASTERN STAR II	15,000.00	1,823.56		539.29	(678.00)	16,684.84
ORDER OF THE EASTERN STAR III	15,000.00	1,823.56		551.71	-	17,375.26
ORRICK, L.C.			40,000.00	194.96	-	40,194.96
OSHEA, WILLIAM	8,097.14	764.17		290.59	-	9,151.90
PATRIAS, FIESTAS	20,000.00	5,465.05		835.09	-	26,300.14
PEARSON, DR. BARBARA	12,880.64	1,120.90		441.83	(564.00)	13,879.37
PICONE, JOE AL & MERLE	16,245.00	1,519.22		570.25	(794.00)	17,540.47
PIERATT, LAURA LEE WILSON	15,000.00	3,324.25		600.91	-	18,925.16
PIERATT, W. H. "BILL"	15,000.00	3,456.34		605.25	-	19,061.59
PLEDGER, MAISIE LOUELLEN	15,575.00	1,277.06		528.98	(745.00)	16,636.04
PLUMMER, BETTY CANTRELL	15,790.00	1,289.22		560.08	-	17,639.29
POHLMAYER, SARAH BETH	635,868.22	71,784.37		22,600.23	(30,301.00)	699,951.82
POWELL, BARBARA & RICHARD	25,871.09	1,666.86		876.89	(1,224.00)	27,190.84
PRENZLER, GLENWOOD AND SHIRLEY	15,000.00	1,288.45	276.00	514.12	(1,000.00)	16,078.57
QUADE, LILLIAN L. AND WILLIAM H. "DOC"	21,170.86	2,208.65		758.40	(942.00)	23,195.91

BLINN COLLEGE FOUNDATION SCHOLARSHIPS AND ENDOWMENTS  
As of May 31, 2023

DESCRIPTION	CORPUS	Accum Earning September 1, 2022	Donations	Interest Earned YTD	Scholarships Awarded	Book Balance May 31, 2023
RAMPIERE, AL & ELIZABETH	23,000.00	2,094.24		799.19	(1,109.00)	24,784.44
RANKIN, MARY STONE	17,068.77	1,355.59		588.88	(814.00)	18,199.24
RANKIN, VAN DYKE	11,000.00	1,158.88		384.36	(537.00)	12,006.24
RATCLIFF, MARTHA JANE PAT	31,520.00	4,229.49		1,156.59	(1,580.00)	35,326.08
REASONER, HARRY M. AND MACEY HODGES	16,750.00	1,483.18		579.49	(600.00)	18,212.67
REESE, HOFFMANN AND KATHERINE	15,035.00	1,240.09		521.92	(360.00)	16,437.02
REMMERT, SYDNEY DELL JOHNSTON	2,389,345.13	269,657.71		85,137.96	(106,880.00)	2,637,260.80
RODGERS, DOUG AND TRISH	209,411.33	13,969.70	2,436.75	7,142.29	(9,948.00)	223,012.07
RODRIGUEZ, PETE	15,000.00	3,760.03		615.20	-	19,375.23
SCHAEFER, ROBERT AND EMILIE	25,136.75	2,720.56		895.13	(561.00)	28,191.44
SCHMID, SANFORD	65,000.00	9,783.58		2,452.41	-	77,235.99
SCHMIDT, JANETTE AND RUBEN	66,089.14	5,780.02		2,309.32	(1,449.00)	72,729.48
SCHOENVOGEL AND FAMILY, Dr. C. W.	110,470.00	13,569.81		4,061.05	(5,000.00)	123,100.86
SCHOENVOGEL FAMILY I	20,000.10	1,311.75	4,894.00	822.46	(890.00)	26,138.31
SCHOENVOGEL FAMILY II	370,060.01	20,674.81		12,725.17	(15,291.00)	388,168.99
SCHOENVOGEL JR., C. WALTER "WALT"	40,000.00	4,902.70		1,454.46	(1,810.00)	44,547.16
SCHOENVOGEL, A. MELTON	40,000.00	3,629.73		1,421.66	(913.00)	44,138.40
SCHOENVOGEL, CHAIRMAN WALT	148,728.56	18,293.17		5,461.02	(5,815.00)	166,667.75
SCHOENVOGEL, DR. AND MRS. CLARENCE	43,000.00	5,357.75		1,566.38	(1,949.00)	47,975.12
SCHOENVOGEL, DR. C.W.	40,000.00	3,659.27		1,421.41	(1,826.00)	43,254.68
SCHOENVOGEL, DR. CLARENCE	40,000.00	4,096.04		1,435.84	(1,810.00)	43,721.88
SCHOMBURG JR., DENNIS W.	15,290.00	1,626.15		554.75	-	17,470.90
SCHOMBURG, DORIS	15,000.00	2,750.11		582.10	-	18,332.21
SCHOMBURG, MELVIN AND MARY	15,000.00	1,307.60		515.49	(721.00)	16,102.09
SCHROEDER, ALLAN R.	19,023.69	2,367.36		681.12	(951.00)	21,121.18
SCHROEDER, DON AND DEBBIE	20,000.00	1,755.81		697.55	(893.00)	21,560.36
SCHROEDER, IRENE & GLIFFARD	343,175.00	31,579.97		11,966.90	(16,667.00)	370,054.87
SCHROEDER, RUDOLPH AND LaTHEL	25,070.00	2,231.66		870.75	(1,207.00)	26,965.41
SCHULTE, ZANE	15,020.00	1,239.08		517.75	(722.00)	16,054.84
SCHWARTZ 50th ANNIVERSARY	-	12,537.97		394.14	(554.00)	12,378.11
SCHWARTZ, ANNIE BELLE BT	-	14,062.50		442.89	(1,590.00)	12,915.39
SCHWARTZ, ANNIE BELLE F	20,561.00	3,464.50		787.87	-	24,813.37
SCHWARTZ, CHARLES W.	-	11,269.25		353.24	(498.00)	11,124.49
SCHWARTZ, KAY	15,000.00	92.64	100.00	498.22	-	15,690.86
SCHWARTZ, WALTER	-	24,850.62		803.99	(1,098.00)	24,556.61
SCHWARTZ, WALTER C.	-	22,127.63		707.51	(988.00)	21,847.13
SEELHORST, ERNEST H - EDUCATION	45,588.48	3,145.33		1,551.95	(2,161.00)	48,124.76
SHARP, JOHN AND CHARLOTTE	33,212.17	2,885.64		1,157.04	(1,455.00)	35,799.85
SHARP, OZELL	20,030.00	2,554.03		735.90	(472.00)	22,847.93
SHEPPEARD, LUCILLE CLICK	13,820.00	1,159.58		484.62	(662.00)	14,802.20
SMITH, EVELYN MARIE WILSON	15,765.00	4,431.29		633.03	(893.00)	19,936.32
SNEED, JANIS	13,413.87	1,317.55		469.16	(651.00)	14,549.58
SOCIAL SCIENCE	90,955.37	6,638.46		3,112.20	(4,331.00)	96,375.02
SPEIR, GREGORY	17,025.00	1,536.00		600.50	(820.00)	18,341.50
STARK, DELBERT	25,000.00	2,026.87		861.37	(1,195.00)	26,693.24
STERN, LONNIE HENRY	35,000.00	3,046.07		1,215.07	(1,562.00)	37,699.14
STOLTENBERG, PAULA K.	20,642.00	3,377.39		780.42	(1,062.00)	23,737.81
STOLZ, LAVERNA - MUSIC FOUNDATION	22,500.00	2,444.78		818.03	-	25,762.81
STOLZ, R. W.	20,000.00	2,121.98		705.53	(980.00)	21,847.51
STONE, CHASE VET TECH	15,868.13	100.72	2,023.82	550.66	-	18,543.33
STRANGE, ROBERT F.	10,000.00	864.25		347.75	(480.00)	10,732.00
STRICKLAND, DONALD L AND JO	15,000.00	952.84		510.06	(643.00)	15,819.91
STYLECRAFT I	30,000.00	1,759.58		1,014.14	(1,280.00)	31,493.73
STYLECRAFT II			15,000.00	19.87	-	15,019.87
THIELEMANN, ALBERT AGRICULTURE	15,000.00	638.54	992.12	521.28	(630.00)	16,521.95
THIELEMANN, ALBERT ENGINEERING	15,000.00	647.16	992.12	507.13	(631.00)	16,515.41
THIELEMANN, MARGARET M.	15,098.44	1,340.91	992.12	547.87	(675.00)	17,304.34
THIENES, NINA DUKES NURSING	33,000.00	1,769.59		1,130.29	(1,401.00)	34,498.88
THIENES, WILLIAM ENGINEERING	20,000.00	7.59		656.10	-	20,663.69
THOMAS, EMIL AND ELAINE	37,622.54	2,442.66	1,743.24	1,300.65	(1,621.00)	41,488.09
TIEMANN, ELTON	23,000.00	33,528.83		1,805.11	(2,070.00)	56,263.95
TIEMANN, LINDA	21,000.00	1,937.05		734.33	(925.00)	22,746.38
TIEMANN, RONNA & LON	20,000.00	1,754.25		695.47	(881.00)	21,568.72
TOMACHEFSKY, BERNITA	10,015.00	917.36		342.69	(483.00)	10,792.05
TOMACHEFSKY, ODIS	16,000.00	1,502.90		548.60	(774.00)	17,277.50
TOMULINSON, EDYNA KUEHN	15,501.00	1,433.54		530.68	(752.00)	16,713.22
TOTTENHAM, RUTH ELIZABETH	14,065.00	1,286.26		499.42	(708.00)	15,142.69
TOUBIN, MILTON	15,000.00	2,164.44		558.47	(500.00)	17,222.91

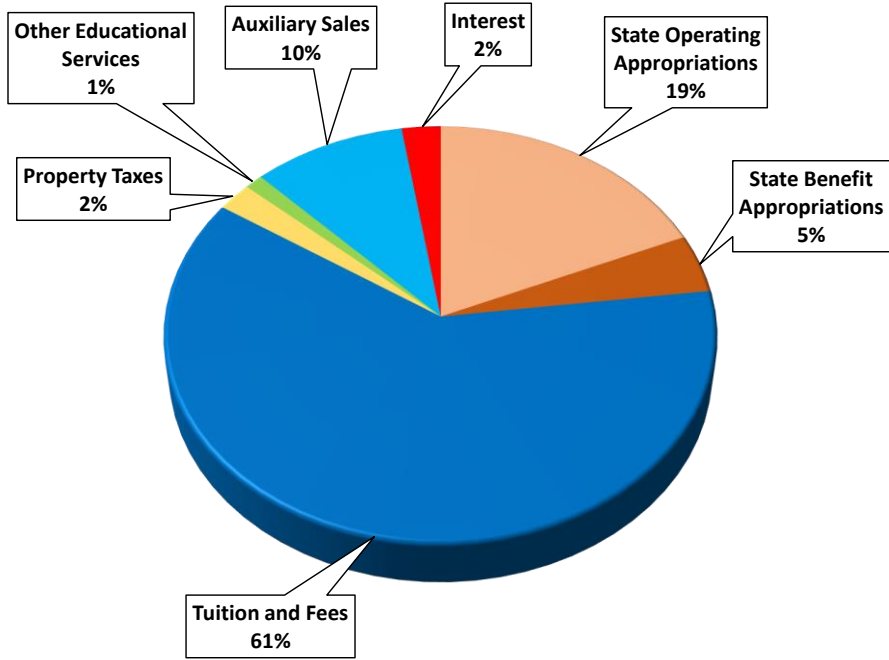
BLINN COLLEGE FOUNDATION SCHOLARSHIPS AND ENDOWMENTS  
As of May 31, 2023

DESCRIPTION	CORPUS	Accum Earning September 1, 2022	Donations	Interest Earned YTD	Scholarships Awarded	Book Balance May 31, 2023
TOUBIN, SAM AND ROSA	25,025.00	3,056.57		920.89	-	29,002.47
TWIGGS, KEITH & ELIZABETH	20,000.00	2,740.45		728.98	(1,789.00)	21,680.43
TWIGGS, KEITH & ELIZABETH II	20,000.00	1,491.86		704.79	-	22,196.64
TYSON ENGINEERING	25,545.00	2,038.51		893.26	(1,132.00)	27,344.78
VANDERWERTH, ELLIE	20,000.00	1,728.50		683.83	(876.00)	21,536.33
VANDERWERTH, ELLIE ADELIA CARTER	20,000.00	1,274.70		670.41	(858.00)	21,087.11
VANDERWERTH, THEODORE	20,000.00	2,567.34		720.60	(910.00)	22,377.95
VINSON & ELKINS L.L.P.	15,000.00	1,526.73		534.69	(730.00)	16,331.41
VOELTER, DR. DONALD	16,002.00	1,370.62		554.93	(708.00)	17,219.55
WAGNER, OLIVER - MASONIC LODGE	20,000.00	1,759.36		694.73	(881.00)	21,573.09
WAHRMUND, LARRY	24,452.23	1,684.06		836.78	(1,053.00)	25,920.07
WALKER, DR. BRENDA SPEIGHTS HITS	14,610.04	1,522.90		525.88	(650.00)	16,008.83
WARREN MASONIC LODGE I	21,640.00	4,333.48		840.63	(1,500.00)	25,314.11
WARREN MASONIC LODGE II	21,640.00	4,113.94		833.42	(1,500.00)	25,087.37
WARREN MASONIC LODGE III	21,640.00	3,119.11		779.86	(1,500.00)	24,038.97
WASHINGTON COUNTY ABSTRACT	15,000.00	967.68		503.17	(644.00)	15,826.86
WASHINGTON COUNTY GO TEXAN- MILTON GASKAMP	15,260.27	3,070.77		601.14	-	18,932.17
WASHINGTON COUNTY GO-TEXAN	17,260.28	3,314.55		674.73	-	21,249.56
WASHINGTON COUNTY GO-TEXAN II (06/17/08)	15,000.00	4,139.61		627.65	-	19,767.26
WATZLAVICK, LEONA MAZUCH - NURSING	16,145.00	1,533.36		575.65	(408.00)	17,846.01
WEHRING, DOROTHY KUNRAD	55,000.00	4,801.67		1,925.81	(2,410.00)	59,317.49
WELLS FARGO	20,000.00	1,734.97		684.04	(876.00)	21,543.00
WHEELER, F. W. BERT AND MAE DEAN	20,000.00	2,469.26		622.64	(13,589.00)	9,502.89
WHEELER, F.W. BERT AND MAE DEAN - NURSING I	276,000.00	29,783.99		9,997.98	(906.00)	314,875.97
WHEELER, F. W. BERT AND MAE DEAN NURSING II	603,488.50	61,764.12		21,589.03	(25,927.88)	660,913.77
WHIGHAM, LARRY & MARY	22,525.00	3,037.78		838.29	-	26,401.08
WHIGHAM, TIMOTHY RAY	22,720.00	11,727.48		1,129.67	-	35,577.15
WHITEHEAD, TOM S. AND EDYTHE	18,349.59	1,510.34		632.30	(887.00)	19,605.23
WIESE WOODS SMITH	25,000.00	1,735.84		854.82	(1,078.00)	26,512.66
WILDER FAMILY	10,050.00	996.95		345.89	(499.00)	10,893.84
WILHELM, DON AND MARY	20,147.14	1,767.70		699.77	(883.00)	21,731.61
WILKES IV, ORAN	15,333.33	1,260.75		533.96	(741.00)	16,387.04
WINKELMANN FAMILY, NATHAN AND DARLA	15,000.00	1,564.87		543.22	-	17,108.09
WINKELMANN WHITMORE, JEAN	65,855.00	(4,587.78)		1,951.44	(2,732.00)	60,486.66
WINKELMANN, F. C. AND FLOY	84,000.00	5,760.71		2,862.45	(3,989.00)	88,634.16
WINKELMANN, SAM AND HELEN KING	628,413.95	75,775.72		22,566.49	(24,178.00)	702,578.15
WINKLER, PHILLIPS SHARPE	36,848.61	3,753.39		1,293.01	(1,799.00)	40,096.00
WOODSON LUMBER CO. - TECHNICAL EDUCATION	20,000.00	1,790.38		695.81	(878.00)	21,608.19
YAGER FOUNDATION	20,000.00	1,800.80		695.86	(891.00)	21,605.66
YORK SR., MILTON GARRETT	22,500.00	1,826.28		774.75	(1,075.00)	24,026.03
YORK, MEREDITH GARRETT	22,500.00	1,726.41		775.04	(1,071.00)	23,930.45
YORK, MIRIAM	22,500.00	1,970.54		783.37	(1,105.00)	24,148.91
YORK, MIRIAM - NURSING	25,000.00	1,999.03		878.35	(1,246.00)	26,631.38
ZIEGENBEIN, MELVIN AND GLADYS	15,000.00	1,670.57		531.03	(745.00)	16,456.59
	\$ 20,333,779.10	\$ 2,738,292.19	\$560,982.81	\$754,824.90	\$ (697,118.18)	\$ 23,690,760.82

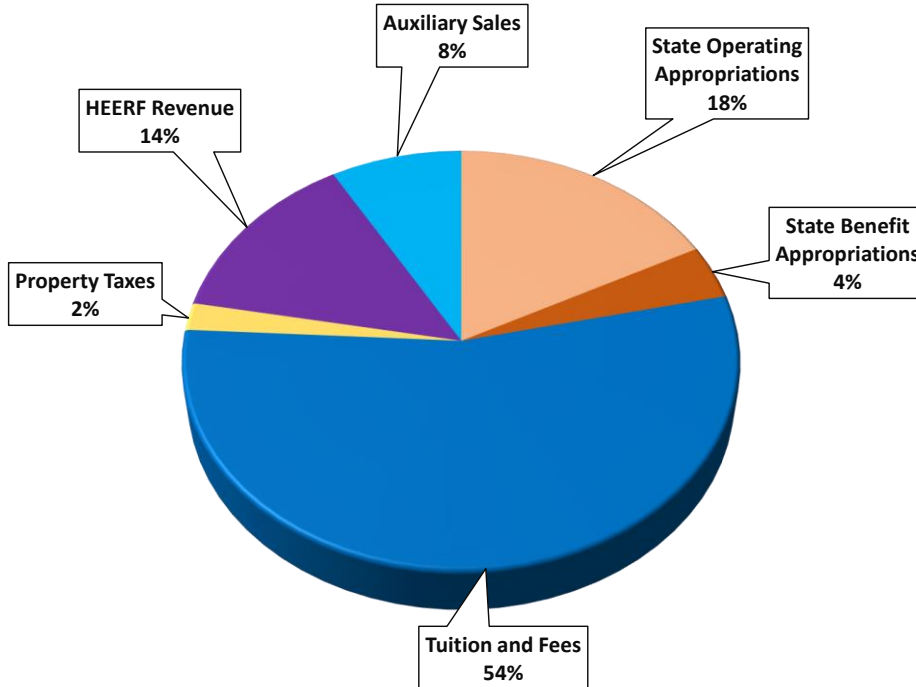
BLINN COLLEGE DISTRICT  
Check Register  
Checks Issued Between: 05/01/2023 - 05/31/2023 (Over \$10,000)

Check Number	Vendor Name	Date of Check	Amount	Description	Category
10033978	Apple Inc	5/18/2023	\$25,082.00	IT Equipment	Operations
!0017860	Assessment Technologies Institute	5/10/2023	\$18,226.67	Nursing programs	Operations
!0017861	Ben E Keith Co	5/10/2023	\$12,159.56	Food & food service supplies	Operations
10033982	Brenham ISD - Tax Office	5/18/2023	\$10,645.96	Collection fee for 2022 taxes	Operations
D0004462	BTU	5/15/2023	\$39,973.48	Utilities	Operations
!0017951	Caldwell & Gregory LLC	5/18/2023	\$26,297.28	Laundry fee-Spring 2023	Operations
!0017954	CDW Government Inc	5/18/2023	\$42,261.90	IT Equipment	Operations
D0004435	City of Brenham Utilities	5/2/2023	\$59,845.10	Utilities	Operations
D0004465	City of Brenham Utilities	5/16/2023	\$62,101.36	Utilities	Operations
!0017797	Dell Marketing L P	5/4/2023	\$99,473.32	IT Equipment	Operations
!0017869	Dell Marketing L P	5/10/2023	\$123,754.27	IT Equipment	Operations
!0017994	Dell Marketing L P	5/25/2023	\$111,196.73	IT Equipment	Operations
!0017996	Educational Computer Systems Inc	5/25/2023	\$28,396.96	2022 1098T forms	Operations
!0017872	Explorance Inc	5/10/2023	\$41,382.00	Blue subscription renewal	Operations
10033992	Family Motor Sports and Toys	5/18/2023	\$10,995.00	Golf cart	Operations
10033994	FedEx Office and Print Services Inc	5/18/2023	\$10,221.61	Monthly copy fees	Operations
!0017802	Green Teams Inc	5/4/2023	\$13,962.00	Monthly landscaping services Bryan & RELIS	Operations
10033863	Home Depot USA Inc	5/4/2023	\$10,811.68	Waste containers for maintenance	Operations
10033803	Hurst Review Services Inc	5/2/2023	\$22,043.00	NCLEX Prep Class	Operations
!0018002	Newman Printing Company Inc	5/25/2023	\$11,687.63	Printing services	Operations
10033933	Optimum	5/10/2023	\$15,433.95	Cable services	Operations
!0018006	Respondus Inc	5/25/2023	\$11,545.00	License renewal 08/01/2023-07/31/2024	Operations
!0018007	SACSCOC	5/25/2023	\$13,761.00	Membership dues 07/01/2023-06/30/2024	Operations
!0017759	Tejas Center LTD	5/2/2023	\$19,592.36	Monthly lease	Operations
10033887	Texas A&M University-Financial Management	5/4/2023	\$26,156.34	Utilities & parking fees	Operations
!0017889	Visionality	5/10/2023	\$31,287.90	IT Equipment	Operations
!0017828	Weaver and Tidwell LLP	5/4/2023	\$16,870.00	Auditing services	Operations
!0017829	Wex Bank	5/4/2023	\$10,444.42	Monthly gas charges	Operations
10034021	Yellowstone Landscape	5/18/2023	\$22,142.18	Monthly landscaping services Brenham campus	Operations
!0017741	Aggieland Construction	5/2/2023	\$38,394.25	Interior access controls Bryan campus	R&R Construction
!0017857	Aggieland Construction	5/10/2023	\$25,911.57	Services for the Moody Library & Interior access controls	R&R Construction
!0017946	Aggieland Construction	5/18/2023	\$28,737.50	Interior corridor reno Bryan campus	R&R Construction
!0017958	CR Systems Inc	5/18/2023	\$406,482.10	Roof replacement Bryan campus & Student Center repair	R&R Construction
!0017749	Custom Access & Integration	5/2/2023	\$82,852.50	Access control infrastructure RELIS campus	R&R Construction
!0017871	Elliott Electric Supply Inc	5/10/2023	\$26,568.50	Parking light pole replacements Bryan Campus	R&R Construction
!0017910	Gowan-Garrett Inc	5/11/2023	\$17,172.00	Services at the Post Office Campus	R&R Construction
10033864	Hunton Services	5/4/2023	\$33,683.00	Chiller repairs Bryan campus	R&R Construction
!0017807	J T Vaughn Construction LLC	5/4/2023	\$14,000.00	Preconstruction services Admin Building on Bryan campus	R&R Construction
!0017809	Johnson Controls Inc	5/4/2023	\$15,131.43	5 year extended warranty on Chiller, Bryan campus	R&R Construction
!0018000	Kimley-Horn and Associates Inc	5/25/2023	\$10,039.30	Services for Briar Creek, Parking Lot K & College Ave & sidewalk	R&R Construction
!0017813	Kirksey Architecture	5/4/2023	\$10,058.40	Food services designer for Bryan Admin building	R&R Construction
!0018001	LED Partners	5/25/2023	\$48,539.50	Student Center LED sign replacement	R&R Construction
!0017755	R.E.C. Industries Inc	5/2/2023	\$341,193.84	Chiller replacement Bryan campus	R&R Construction
!0018005	R.E.C. Industries Inc	5/25/2023	\$19,612.63	Chiller replacement Bryan campus	R&R Construction
!0017884	Sitek Omni Services, LLC	5/10/2023	\$24,400.00	Asbestos abatement & demo of house at 1111 High St	R&R Construction
!0018009	T.E.A.M. Solutions, Inc.	5/25/2023	\$47,673.61	Bryan BAS upgrades	R&R Construction

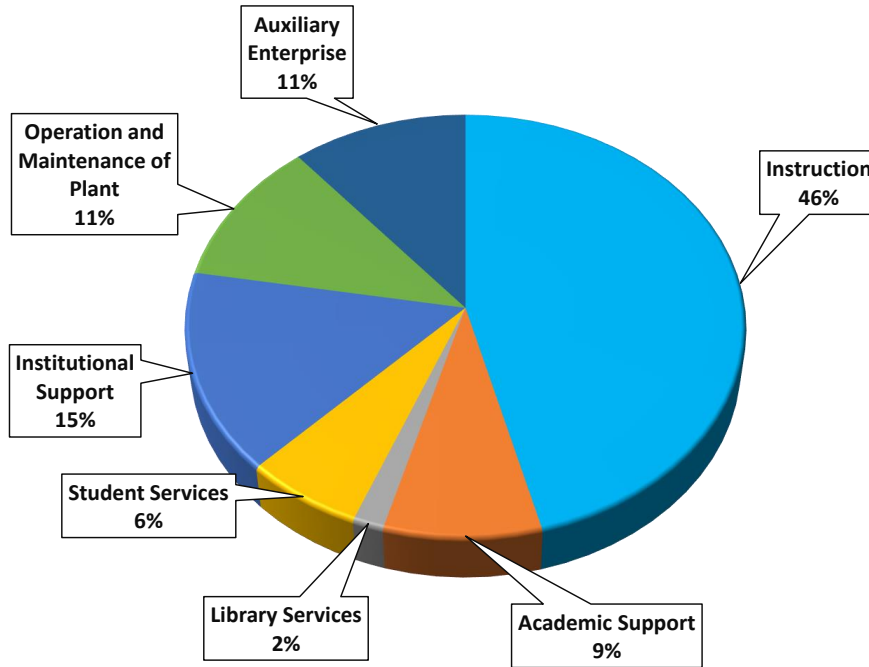
Fiscal Year 2023



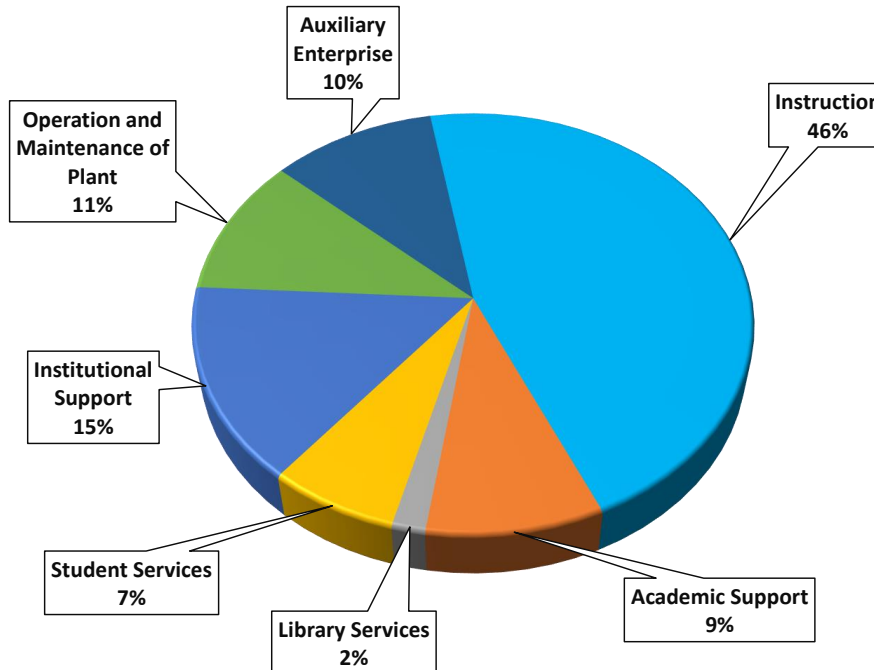
Fiscal Year 2022



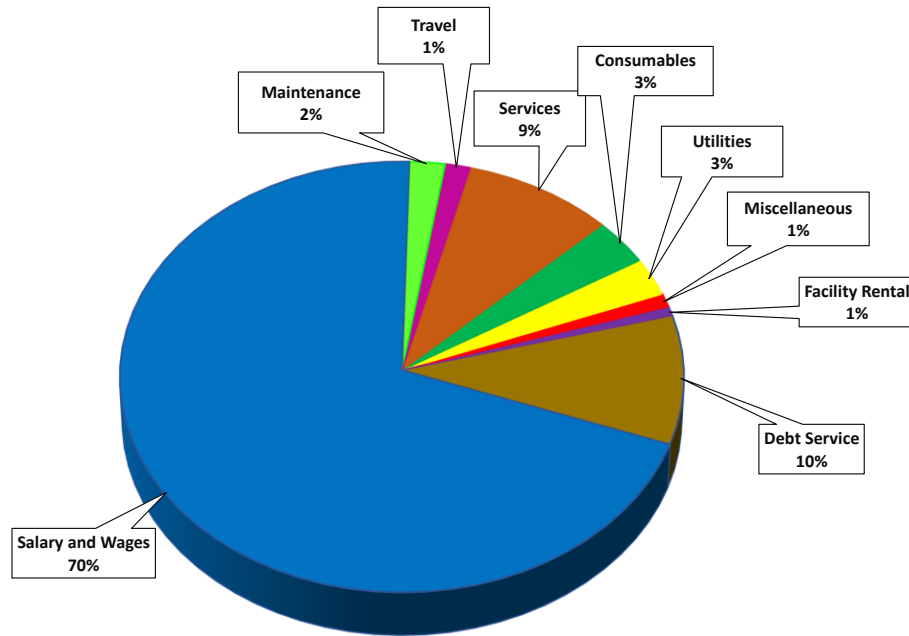
Fiscal Year 2023



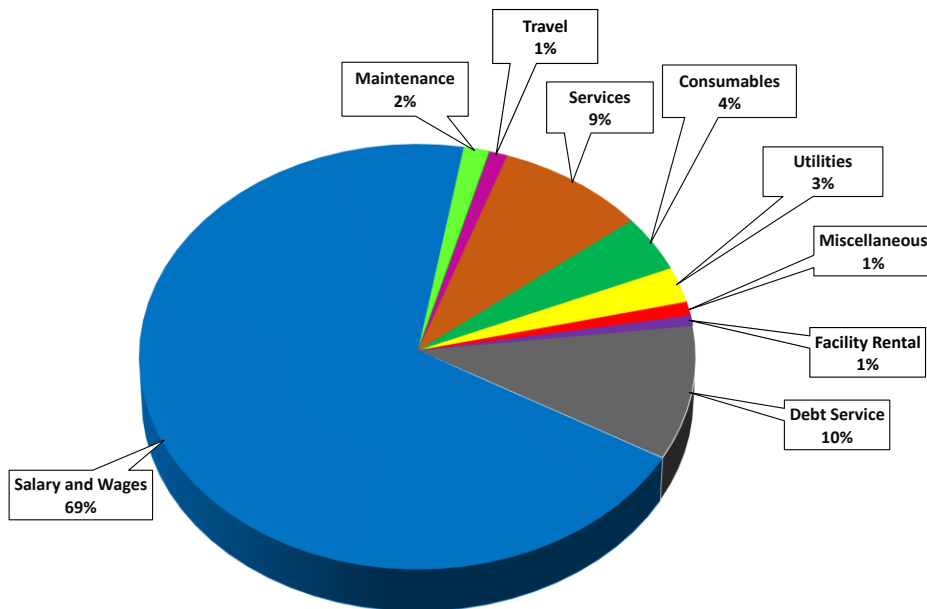
Fiscal Year 2022



Fiscal Year 2023

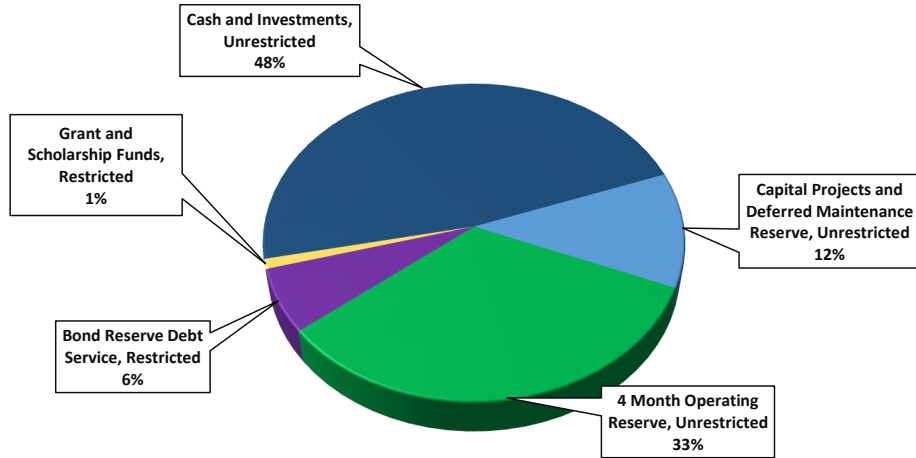


Fiscal Year 2022

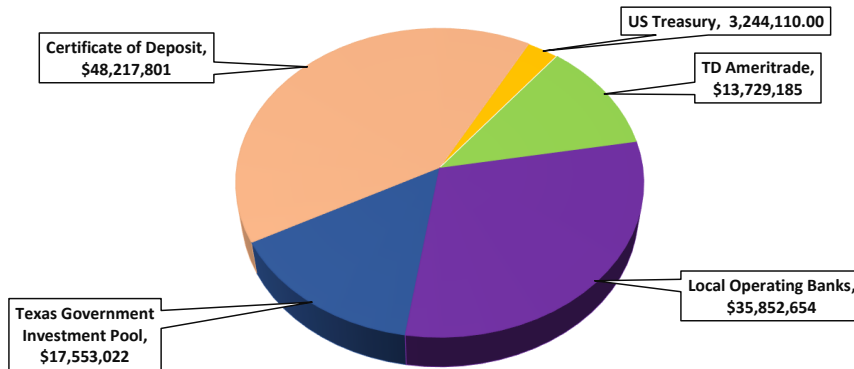




**Allocation of  
 Total Cash and Investments**



**Composition of  
 Unrestricted Cash and Investments**



**Composition of  
 Restricted Cash and Investments**

