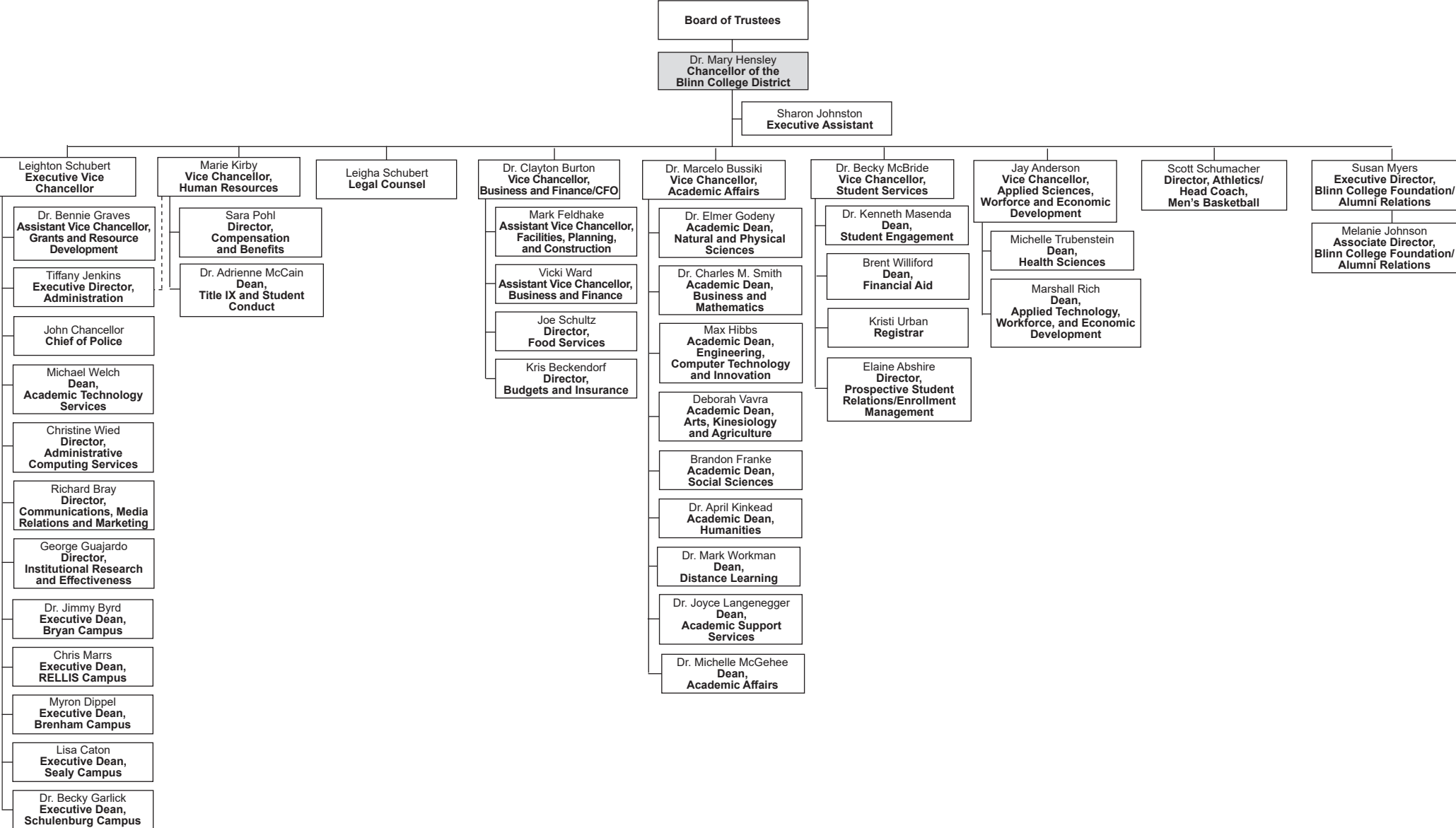
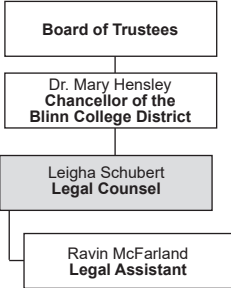


BLINN COLLEGE ORGANIZATION BY PERSONNEL

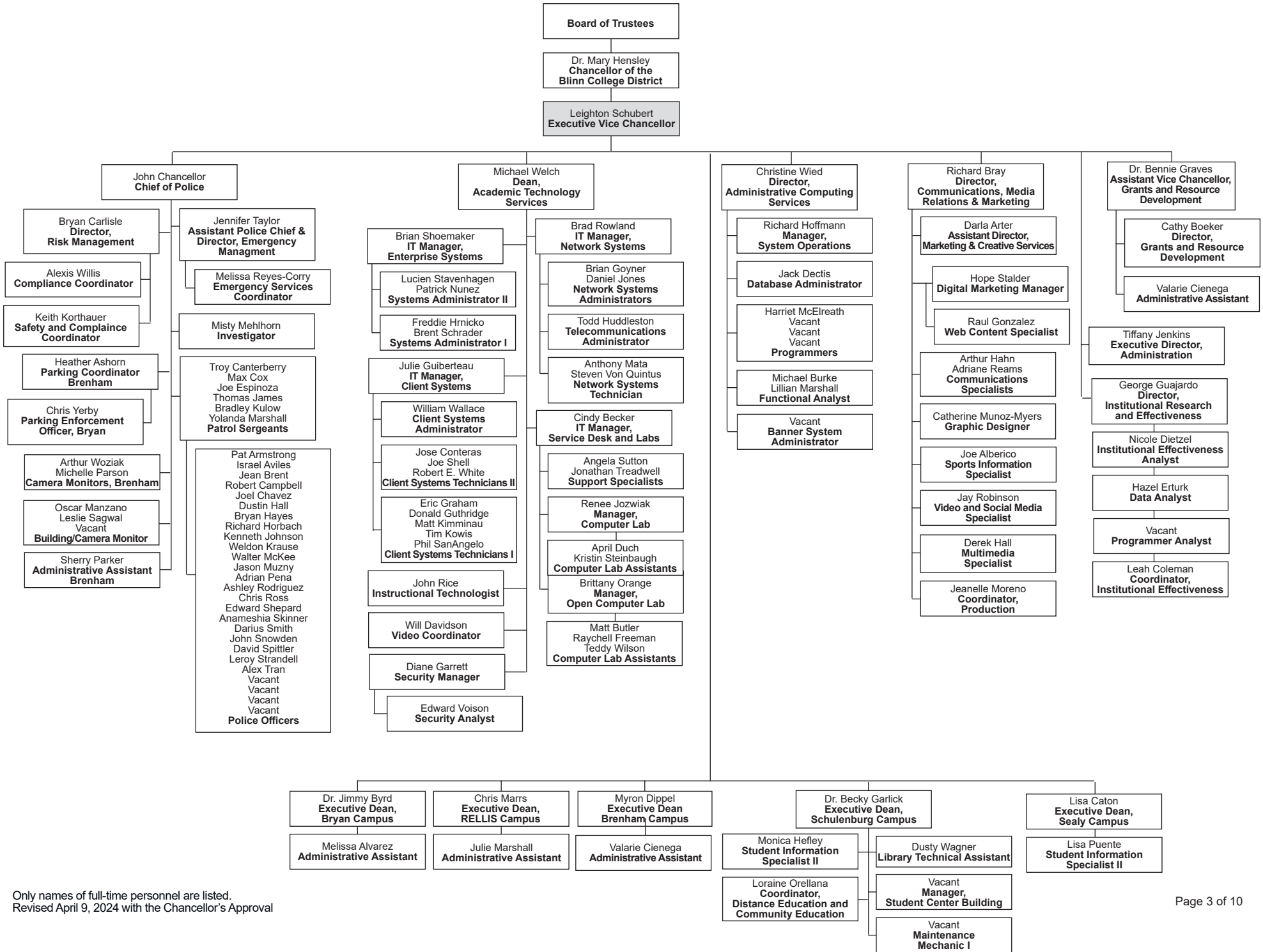


Only names of full-time personnel are listed.
Revised January 9, 2024 with the Chancellor's Approval

BLINN COLLEGE ORGANIZATION BY PERSONNEL

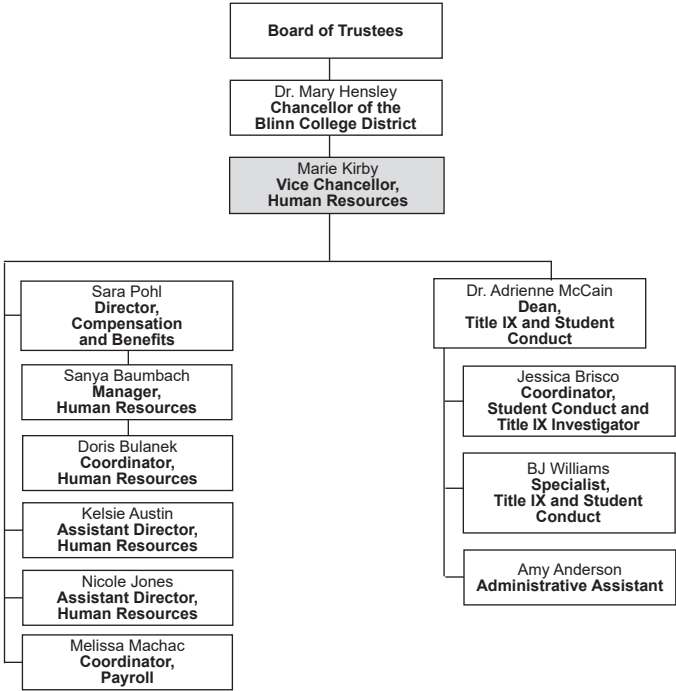


BLINN COLLEGE ORGANIZATION BY PERSONNEL



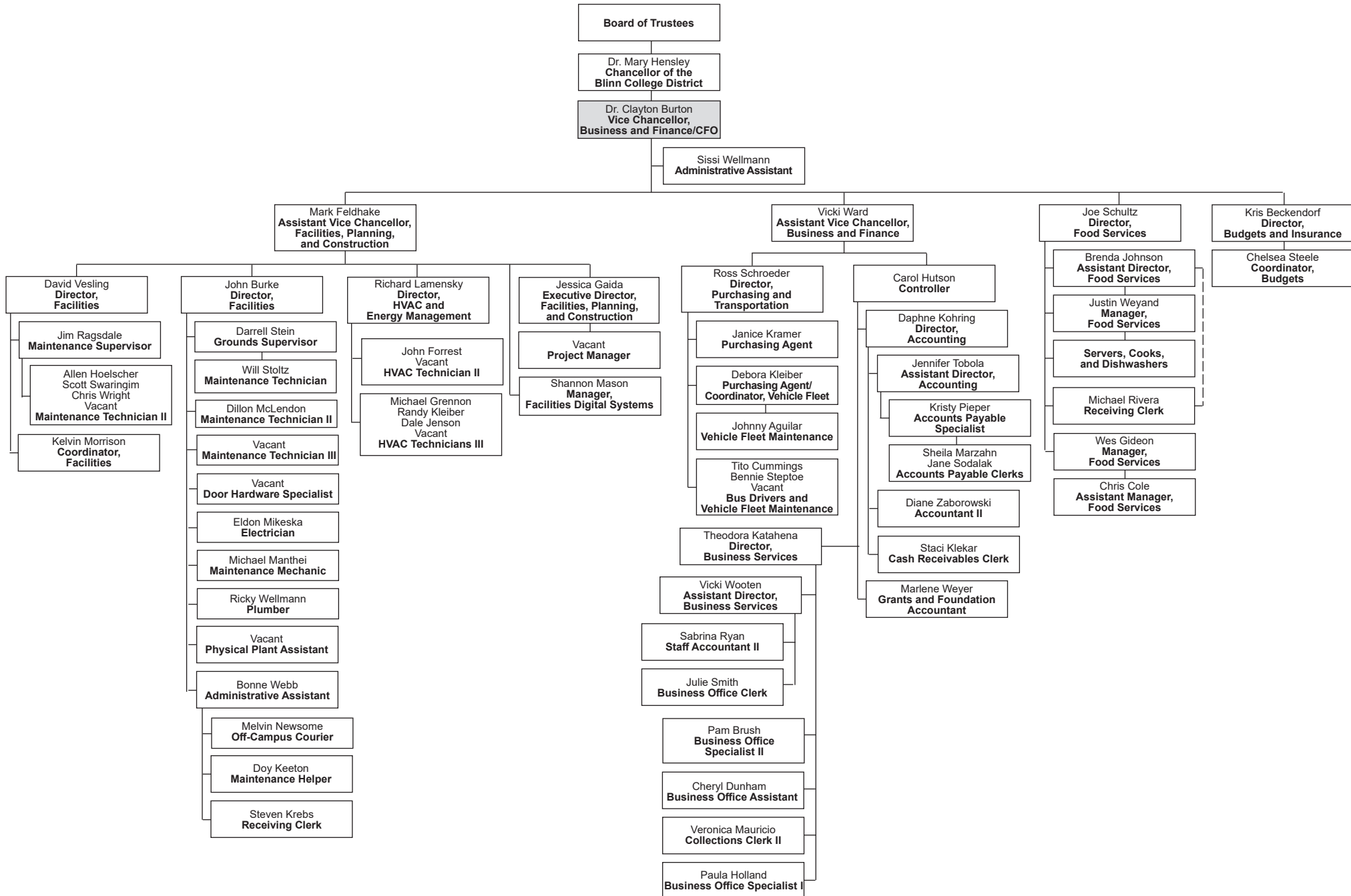
Only names of full-time personnel are listed.
Revised April 9, 2024 with the Chancellor's Approval

BLINN COLLEGE ORGANIZATION BY PERSONNEL



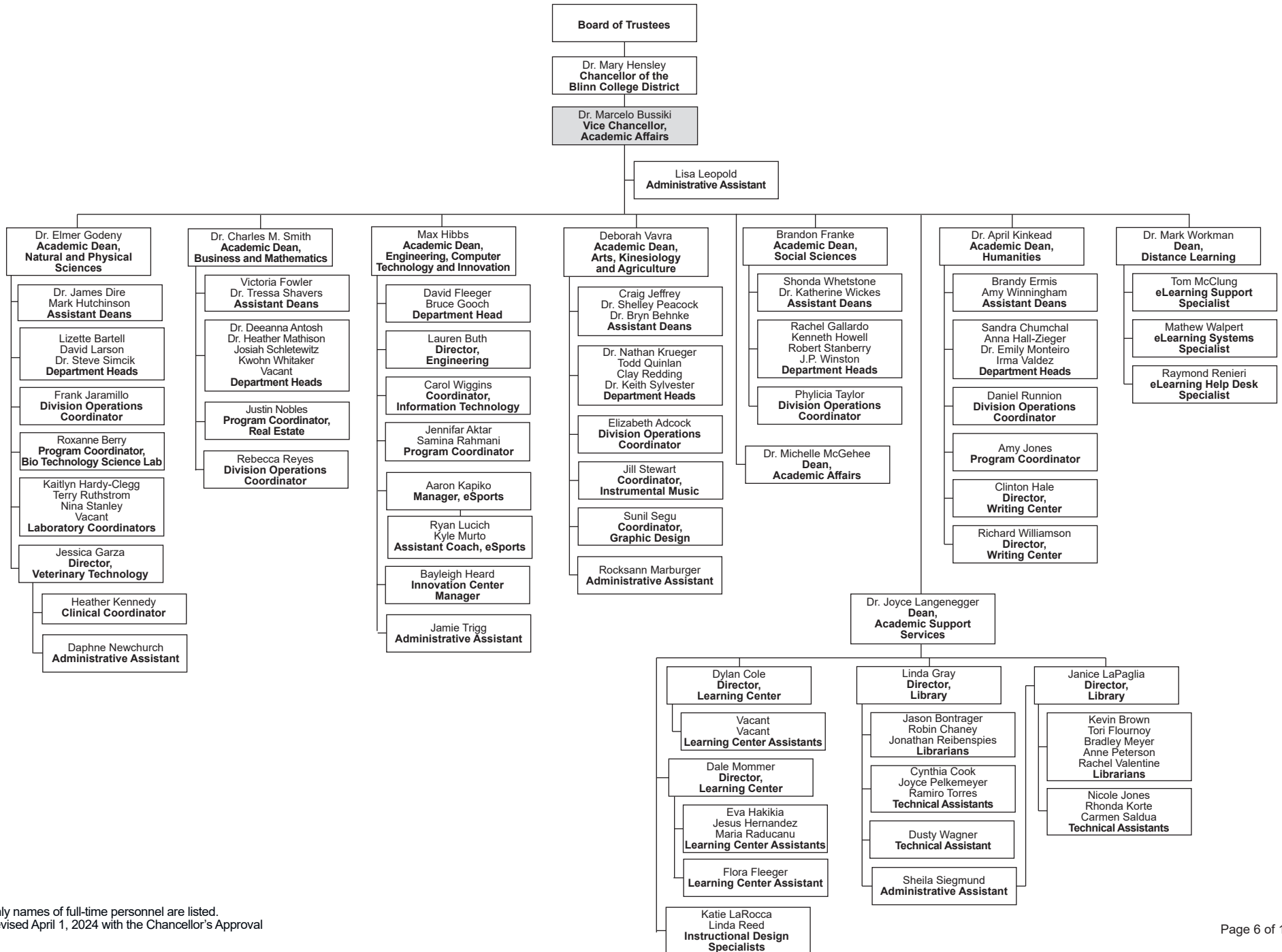
Only names of full-time personnel are listed.
Revised May 6, 2024 with the Chancellor's Approval

BLINN COLLEGE ORGANIZATION BY PERSONNEL



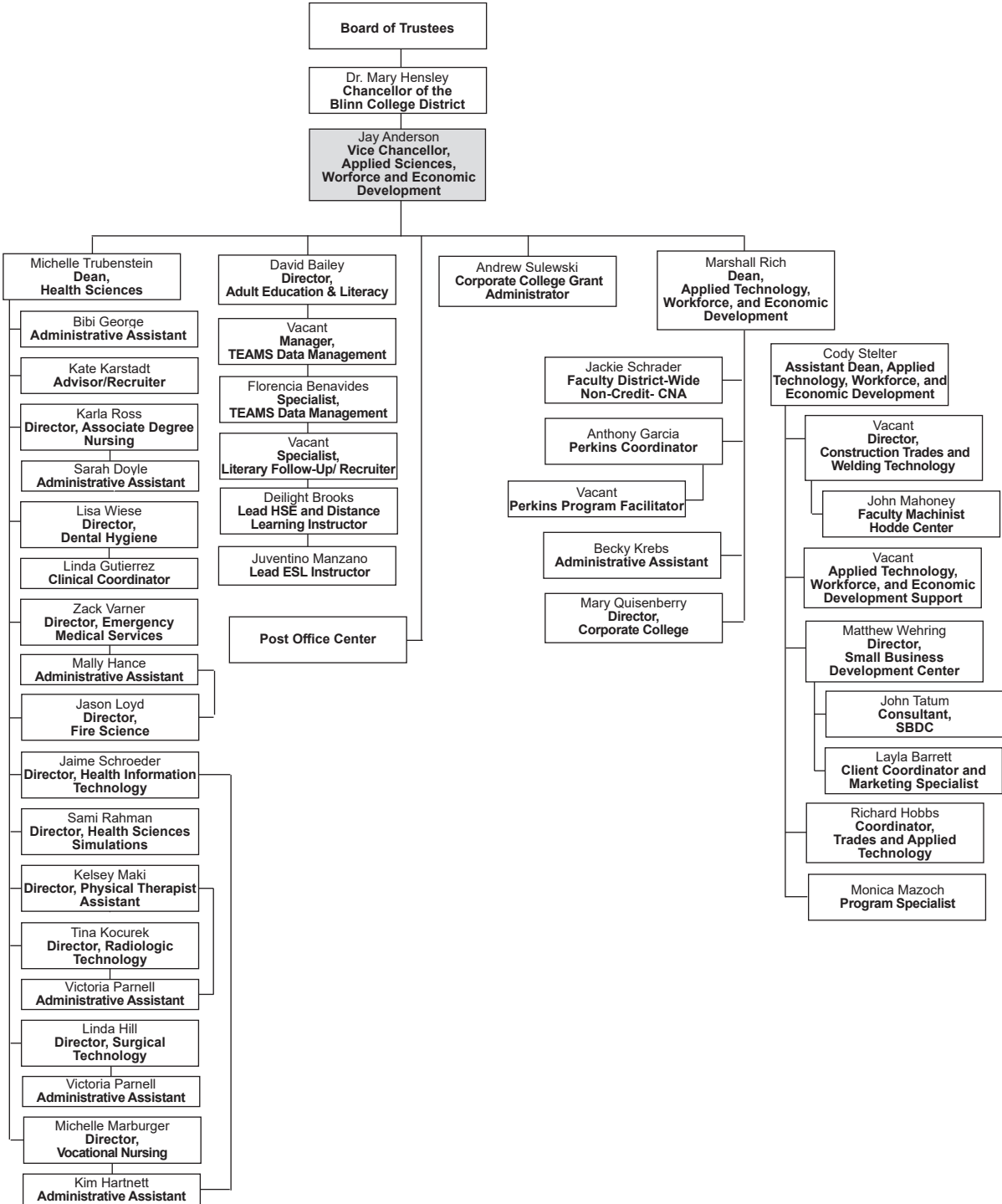
Only names of full-time personnel are listed.
Revised April 24, 2024 with the Chancellor's Approval

BLINN COLLEGE ORGANIZATION BY PERSONNEL



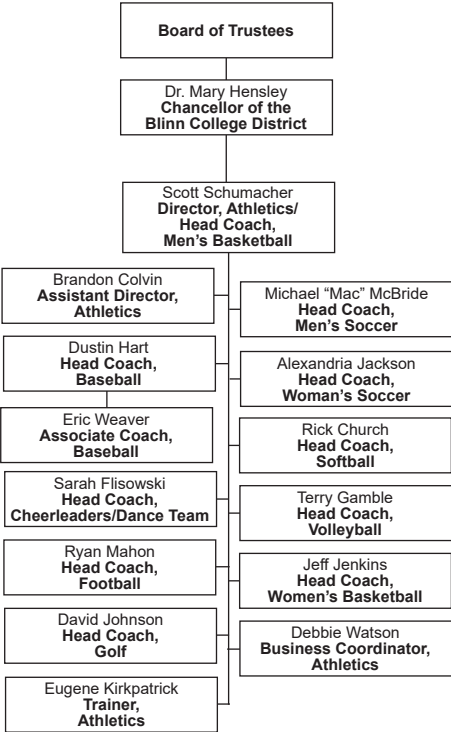
Only names of full-time personnel are listed.
Revised April 1, 2024 with the Chancellor's Approval

BLINN COLLEGE ORGANIZATION BY PERSONNEL



Only names of full-time personnel are listed.
Revised February 1, 2024 with the Chancellor's Approval

BLINN COLLEGE ORGANIZATION BY PERSONNEL



BLINN COLLEGE ORGANIZATION BY PERSONNEL

